

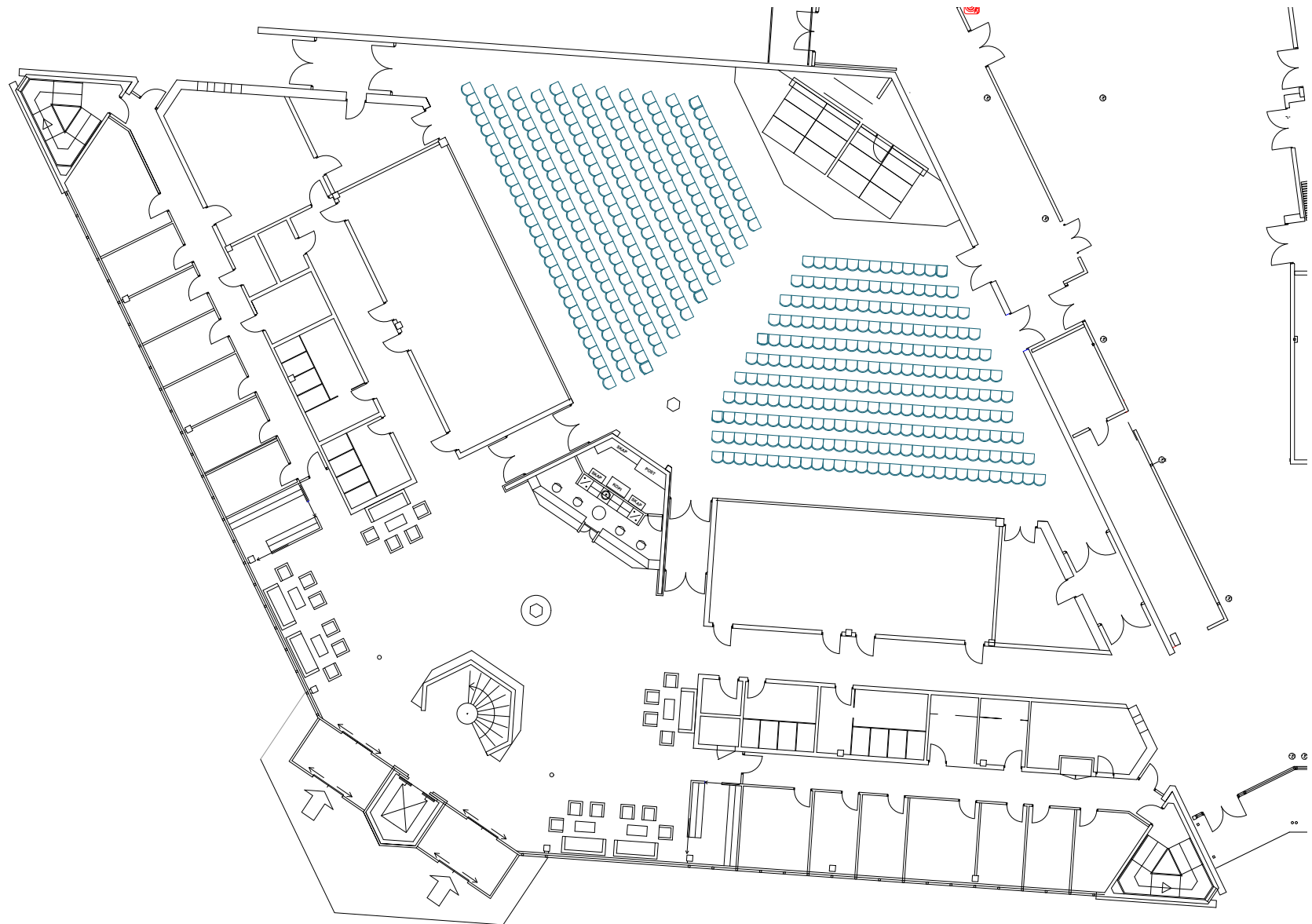
MEDIUM-SIZED MEETING ROOMS

Lysefjorden A + B, Stavanger Forum

Area: 480 m²

Capacity: 492 pax

Set up: Cinema



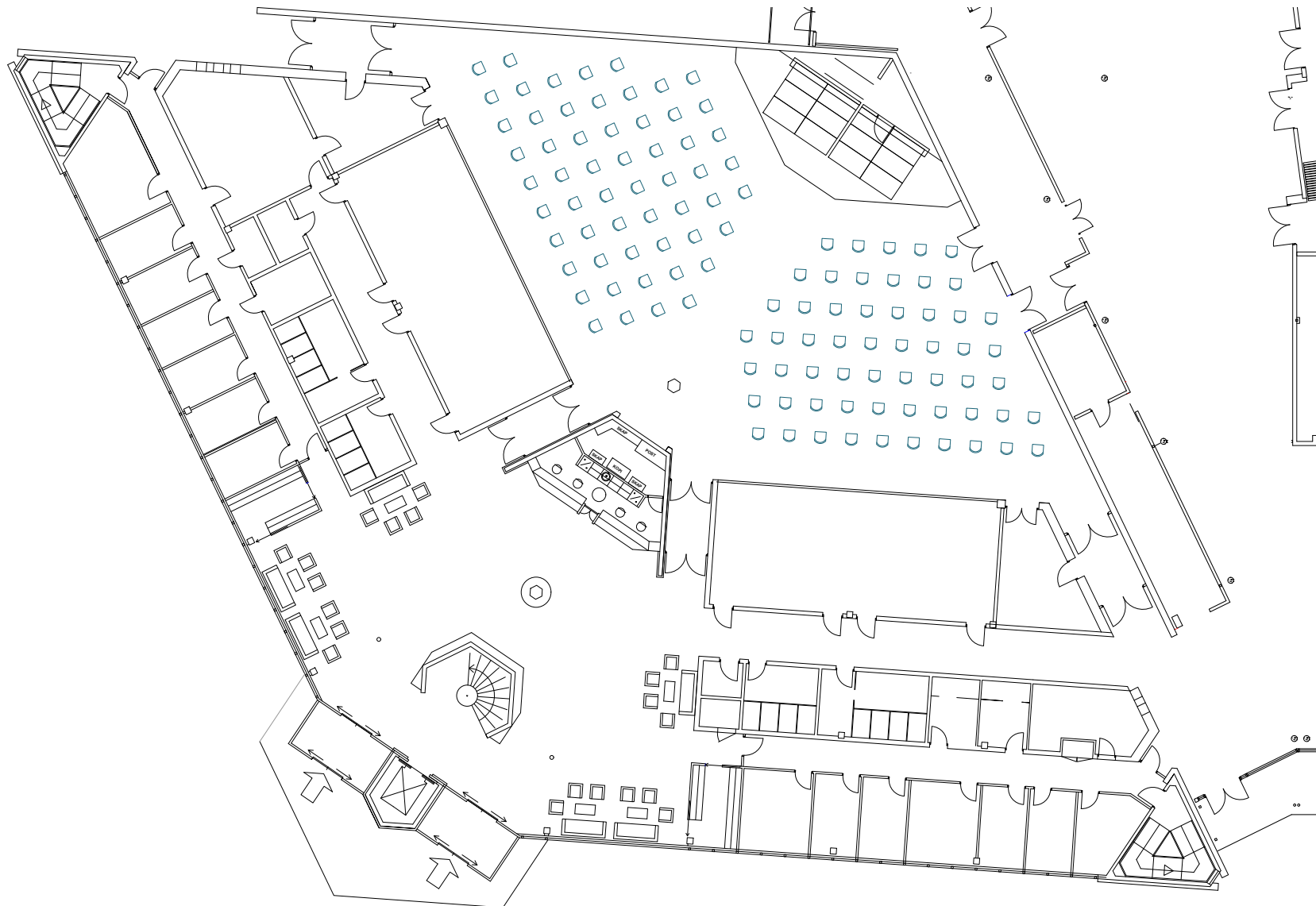
MEDIUM-SIZED MEETING ROOMS

Lysefjorden A + B, Stavanger Forum

Area: 480 m²

Capacity: 114 pax

Set up: Cinema - Corona



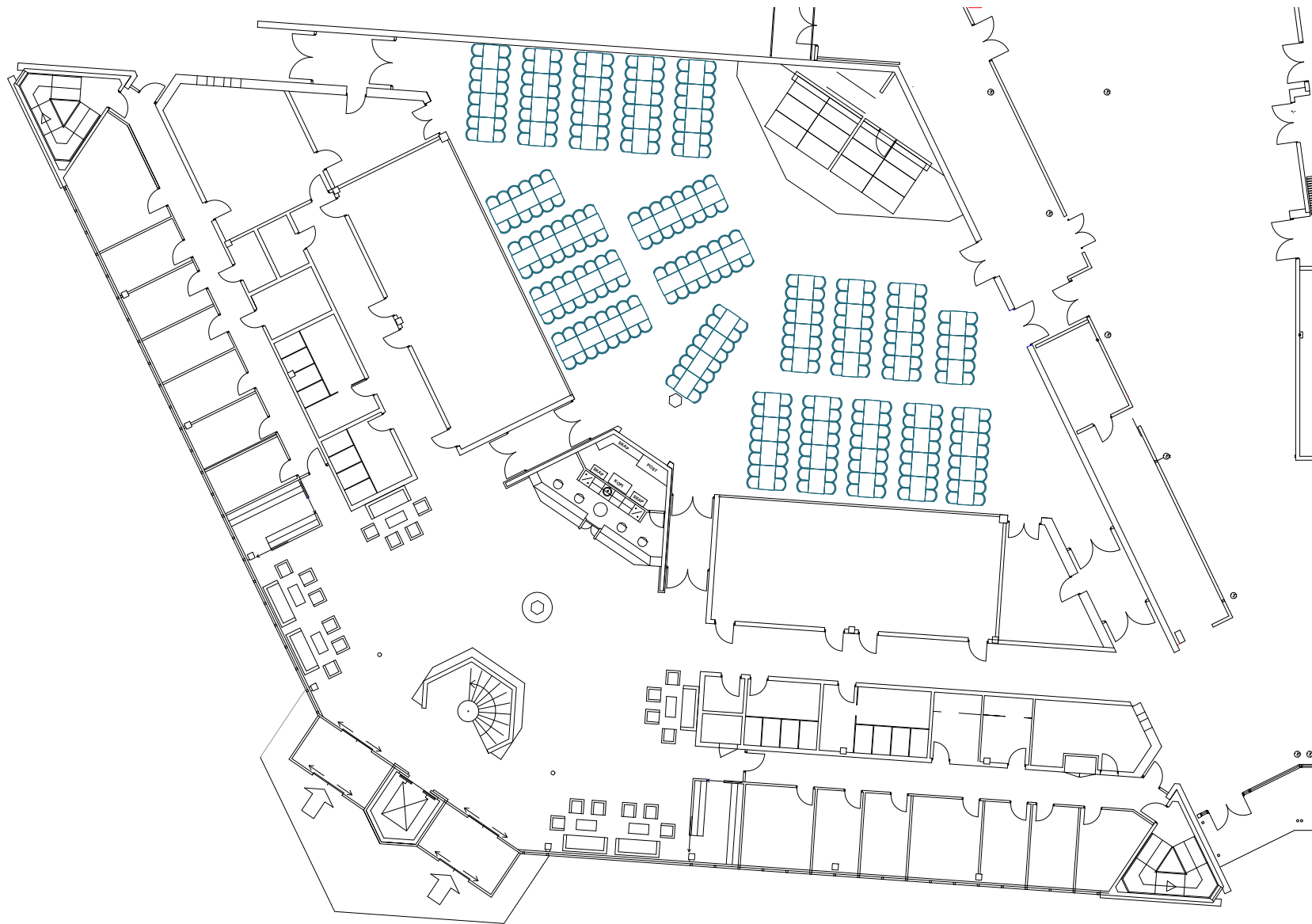
MEDIUM-SIZED MEETING ROOMS

Lysefjorden A + B, Stavanger Forum

Area: 480 m²

Capacity: 328 pax

Set up: Rectangular tables



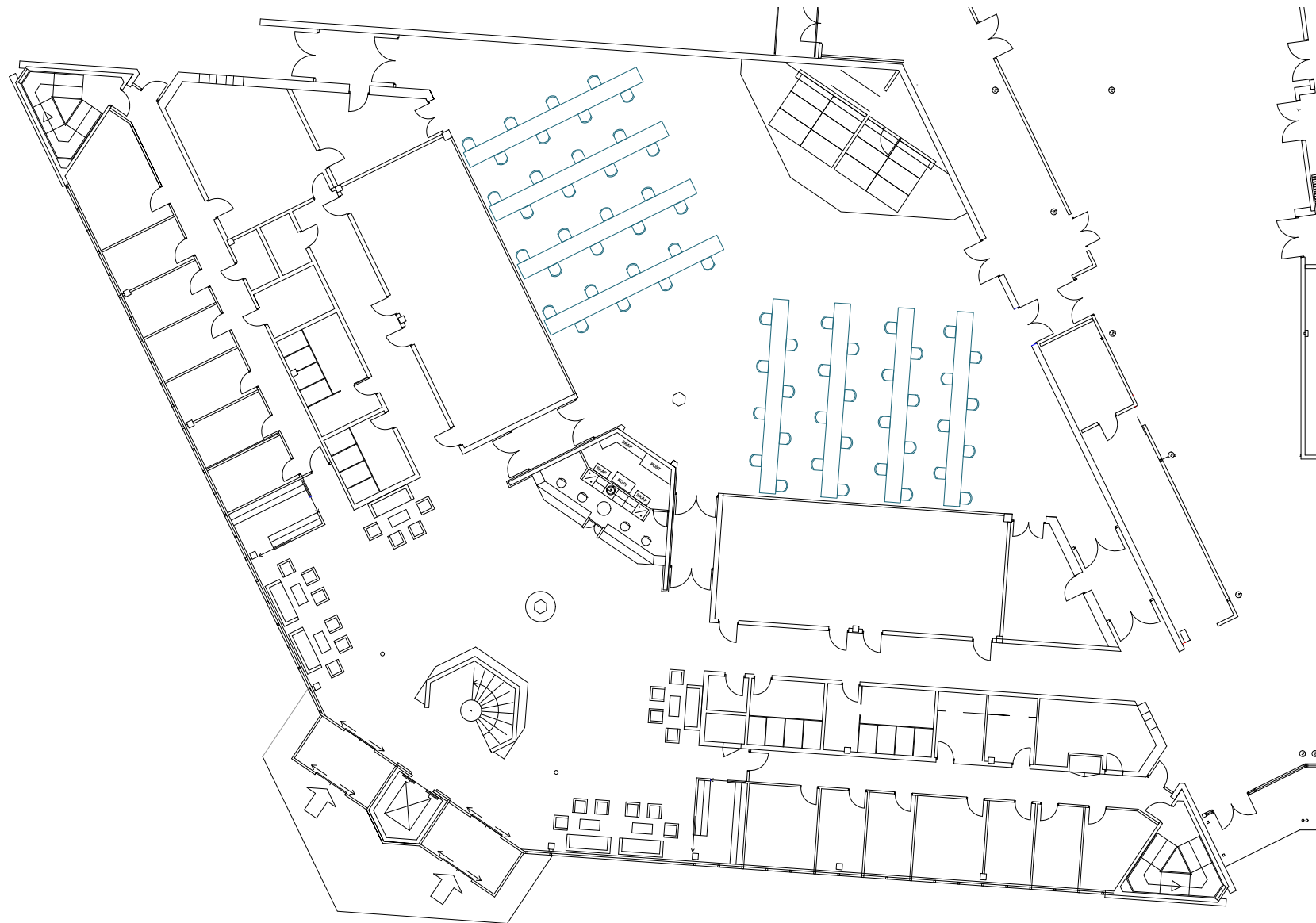
MEDIUM-SIZED MEETING ROOMS

Lysefjorden A + B, Stavanger Forum

Area: 480 m²

Capacity: 64 pax

Set up: Rectangular tables - corona



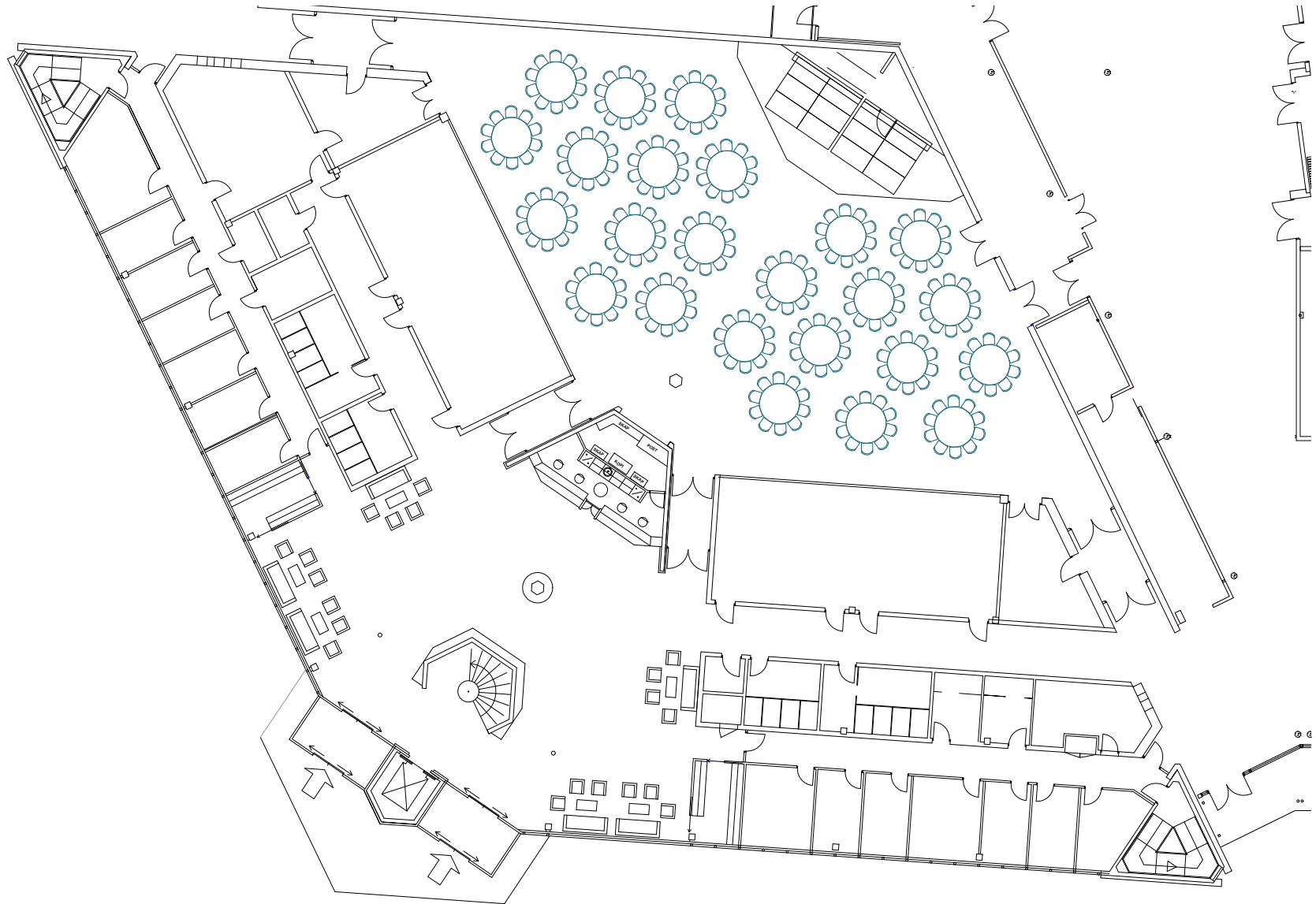
MEDIUM-SIZED MEETING ROOMS

Lysefjorden A + B, Stavanger Forum

Area: 480 m²

Capacity: 240 pax

Set up: Round tables



MEDIUM-SIZED MEETING ROOMS

Lysefjorden A + B, Stavanger Forum

Area: 480 m²

Capacity: 104 pax

Set up: Round tables - corona



LYSEFJORDEN A + B, STAVANGER FORUM

Technical specifications

| | | Comments | |
|-----------------------------------|-------------------------------------|-----------------|--|
| Network | N/A WLAN (N/A LAN) | | For full technical specification, contact Eli Anne Fossdal at elianne@imiforum.no |
| Projector | None | | |
| Back stage accommodation | None | | |
| House lightning | None | | |
| House sound / PA equipment | None | | |
| Truss / ceiling high | No truss. N/A meter ceiling height. | | |
| Stage | None | | |
| Drapes | None | | |