

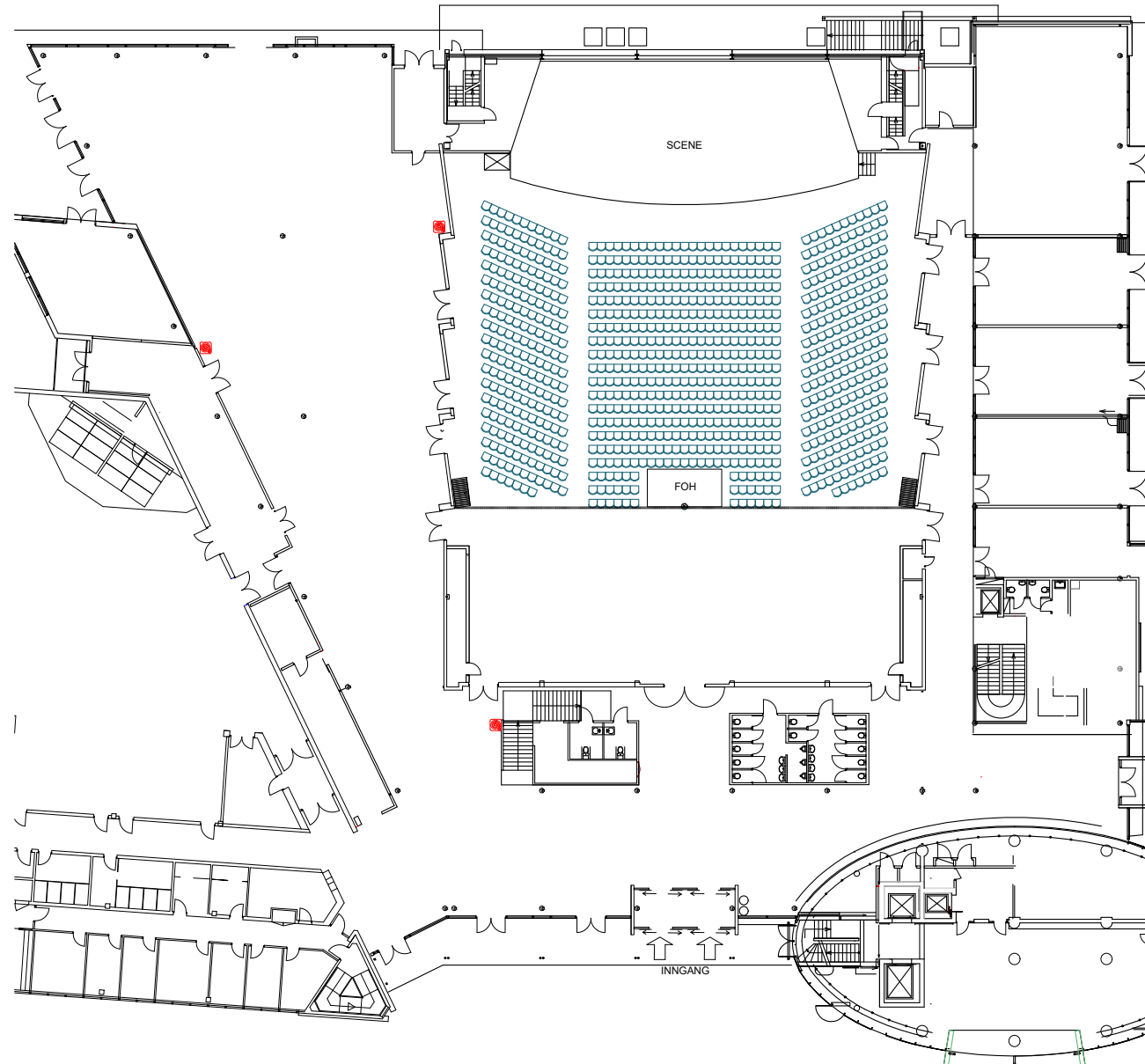
# LARGE MEETING ROOMS

Storsal A, IMI Forum

**Area:** 680 m<sup>2</sup>

**Capacity:** 837 pax

**Set up:** Cinema



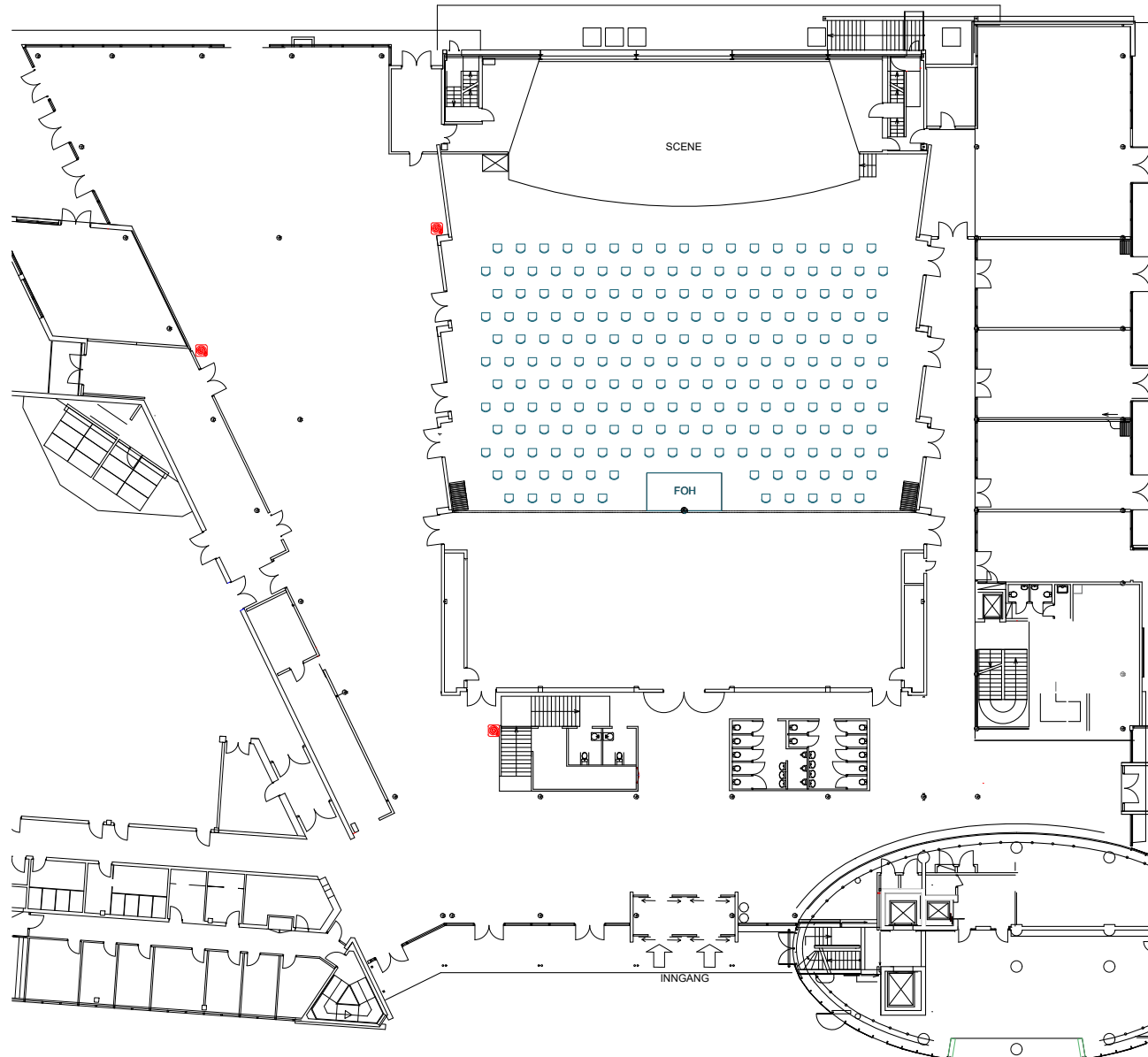
# LARGE MEETING ROOMS

Storsal A, IMI Forum

**Area:** 680 m<sup>2</sup>

**Capacity:** 197 pax

**Set up:** Cinema - Corona



# LARGE MEETING ROOMS

Storsal A, IMI Forum

**Area:** 680 m<sup>2</sup>

**Capacity:** 576 pax

**Set up:** Rectangular tables



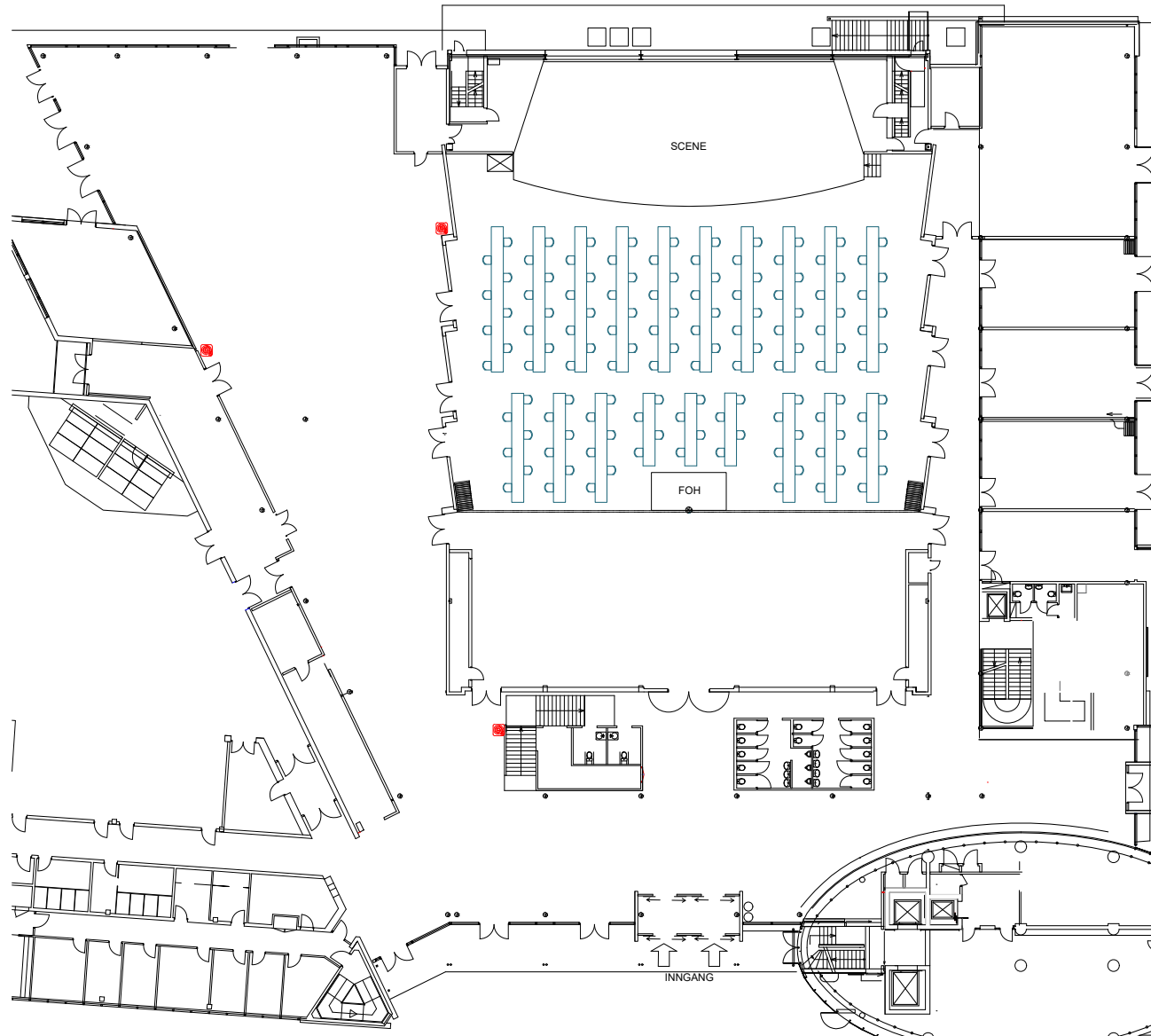
# LARGE MEETING ROOMS

Storsal A, IMI Forum

**Area:** 680 m<sup>2</sup>

**Capacity:** 128 pax

**Set up:** Rectangular tables - Corona



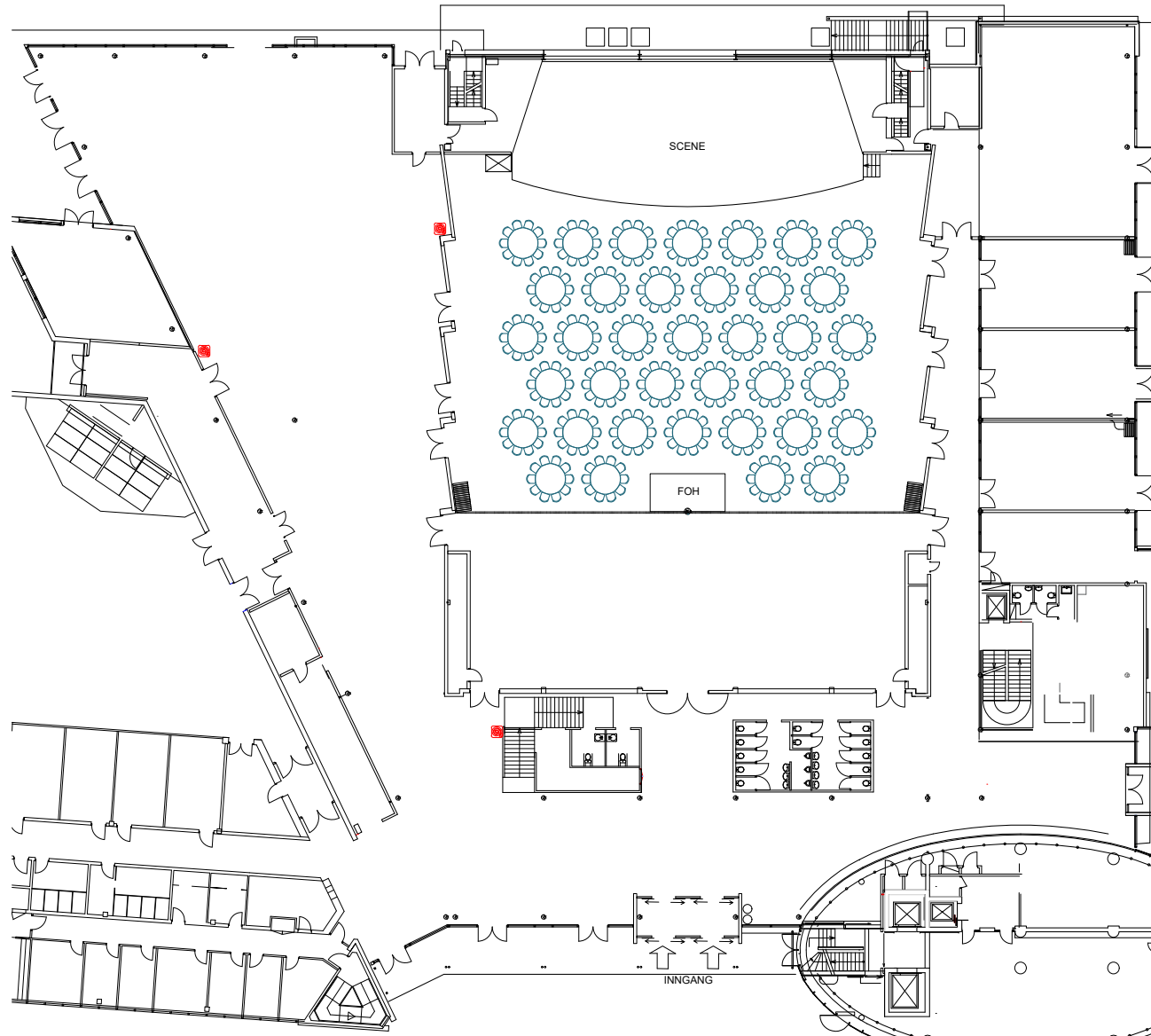
# LARGE MEETING ROOMS

Storsal A, IMI Forum

**Area:** 680 m<sup>2</sup>

**Capacity:** 370 pax

**Set up:** Round tables



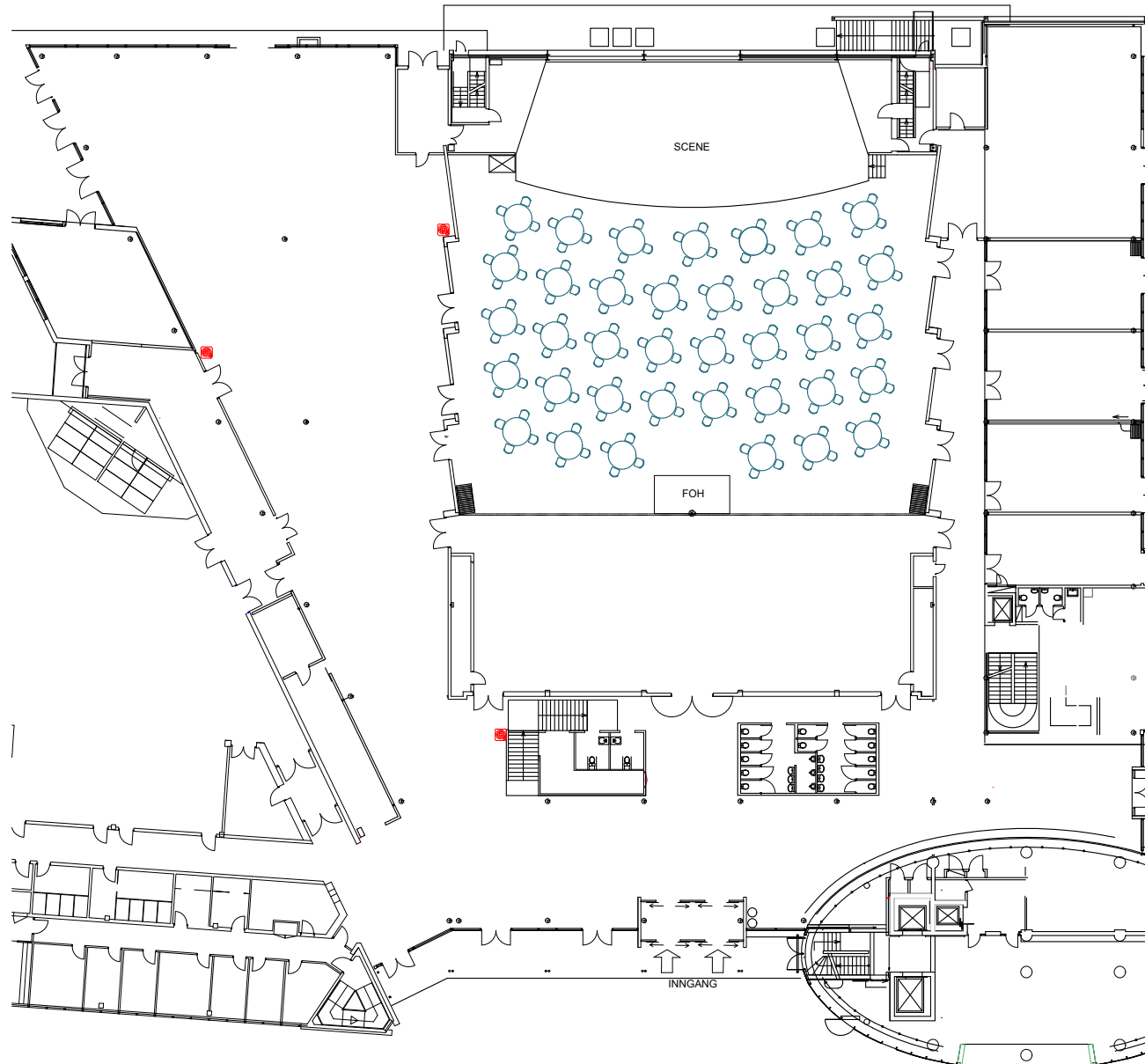
# LARGE MEETING ROOMS

Storsal A, IMI Forum

**Area:** 680 m<sup>2</sup>

**Capacity:** 148 pax

**Set up:** Round tables - Corona



# STORSAL A, IMI FORUM

## Technical specifications

<b>Network</b>	N/A WLAN (N/A LAN)	<b>Comments</b>	6 camera multicamera production also included.
<b>Projector</b>	2 x Panasonic PT-EW630E (5500 ANSI/Lumen)		For full technical specification: <a href="https://imi-forum-6945bb.webflow.io/arrangorinfo">https://imi-forum-6945bb.webflow.io/arrangorinfo</a>
<b>Back stage accommodation</b>	None		
<b>House lightning</b>	30 profil, 20 fresnell, 50 PAR, 30 moving head, haze and Martin M1 lighting controller and more included.		
<b>House sound / PA equipment</b>	6 inear, 6 wireless transmitter/ receiver, 6 inear, Digico SD12-96.8 Nexo Alpha Fullrange, 2 Alpha S2 sub, 6 Ps10 (downfill + delay), 2 Ps8 (frontfill) 12 monitors and more included		
<b>Truss / ceiling hight</b>	11x motorized truss over stage. N/A meter ceiling height		
<b>Stage</b>	23,4x9,7 meter, 100 cm height (190 m2)		
<b>Drapes</b>	None		