

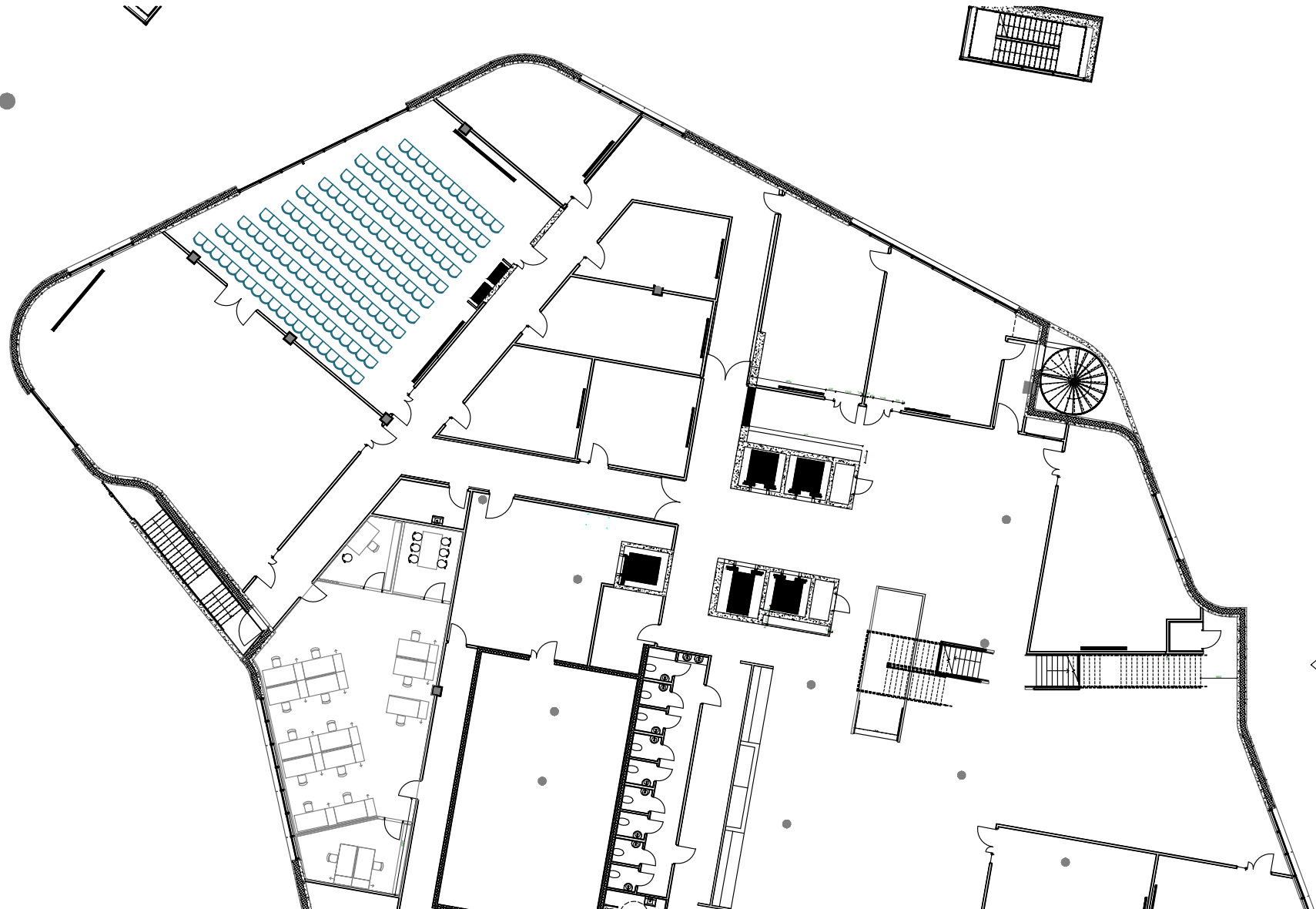
EXTRA LARGE MEETING ROOMS

Clarion Hotel Energy, Share 1+ 2

Area: 162 m²

Capacity: 174 pax

Set up: Cinema



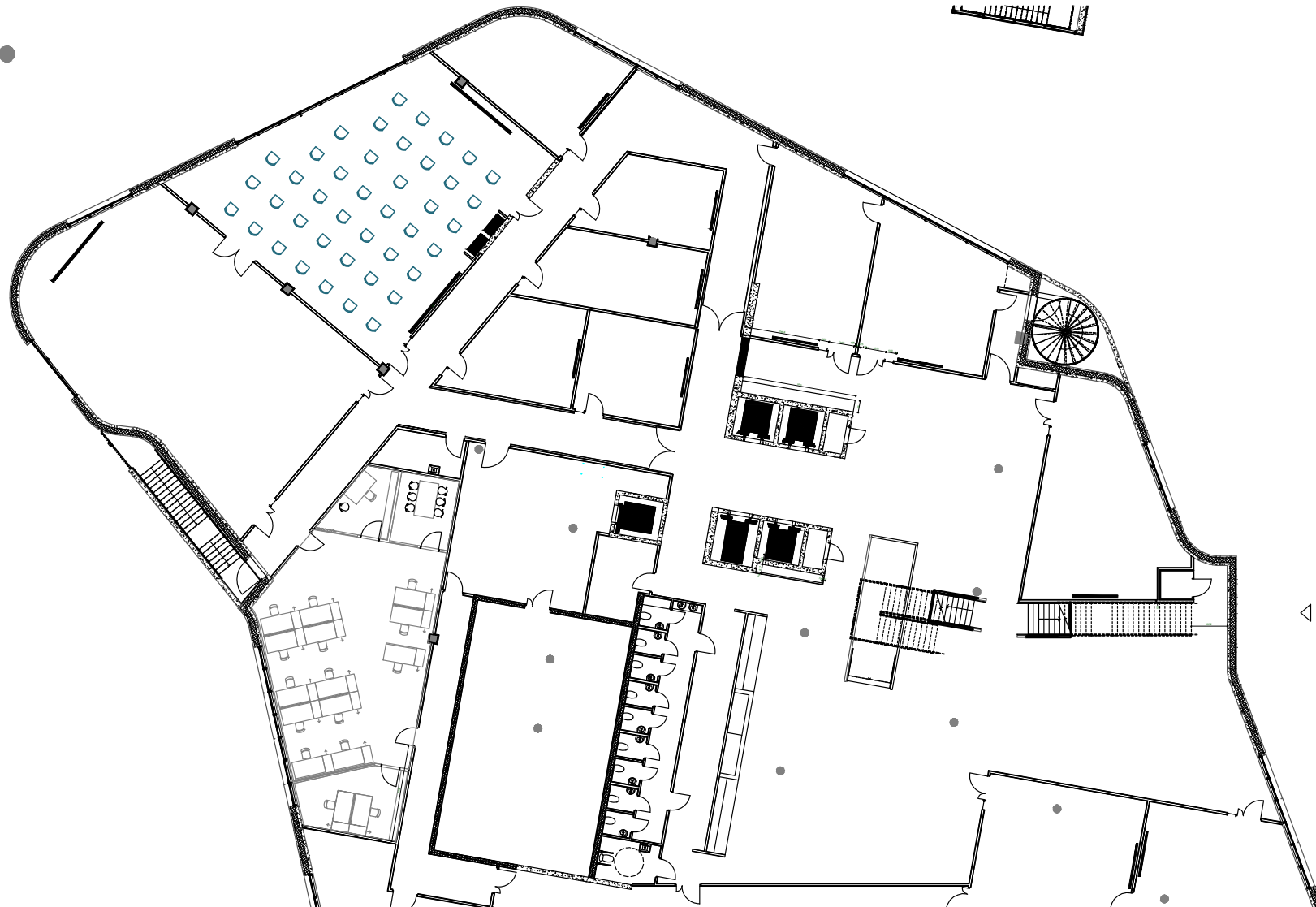
EXTRA LARGE MEETING ROOMS

Clarion Hotel Energy, Share 1+ 2

Area: 162 m²

Capacity: 42 pax

Set up: Cinema - Corona



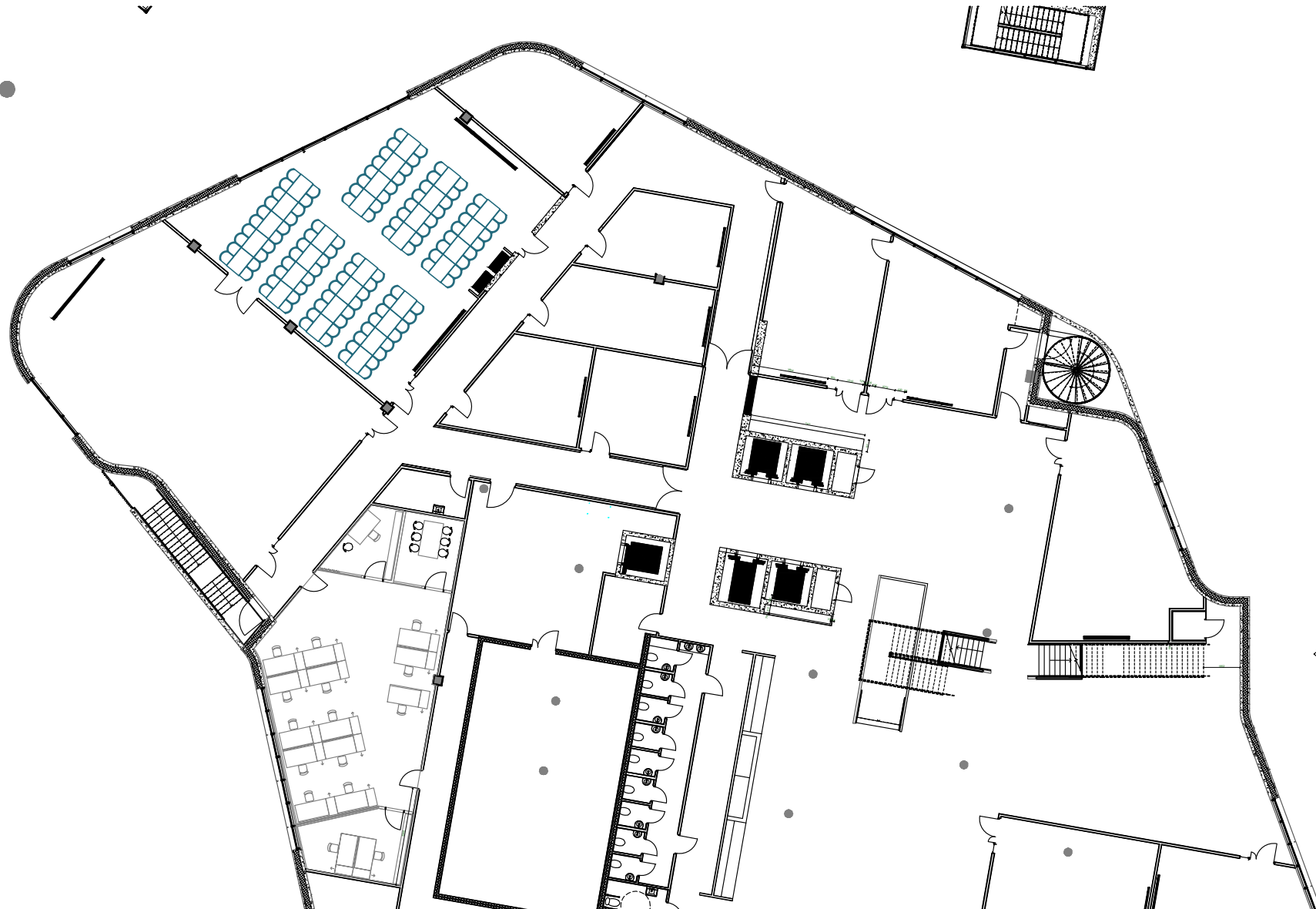
EXTRA LARGE MEETING ROOMS

Clarion Hotel Energy, Share 1+2

Area: 162 m²

Capacity: 116 pax

Set up: Rectangular tables



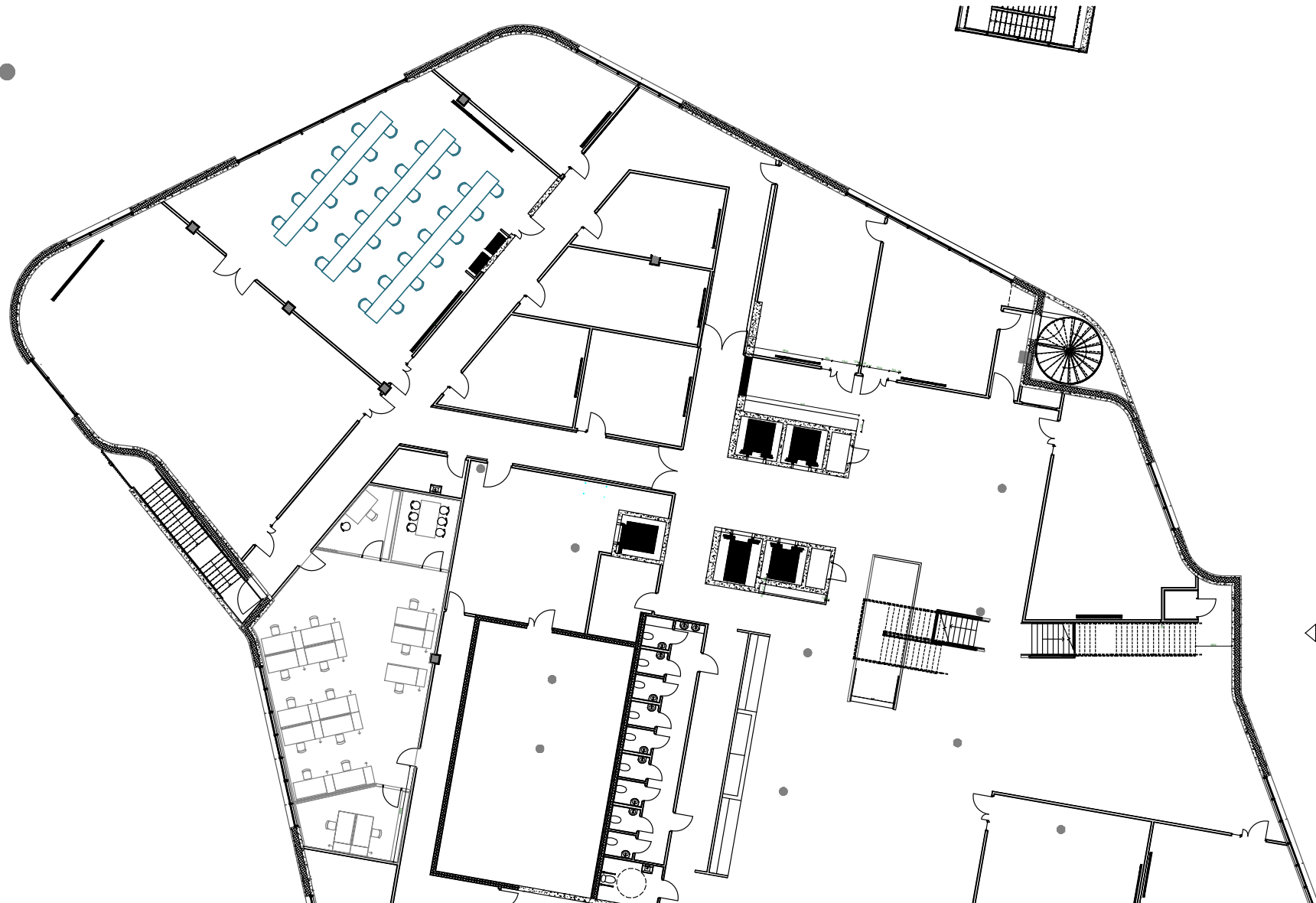
EXTRA LARGE MEETING ROOMS

Clarion Hotel Energy, Share 1+ 2

Area: 162 m²

Capacity: 32 pax

Set up: Rectangular tables - Corona



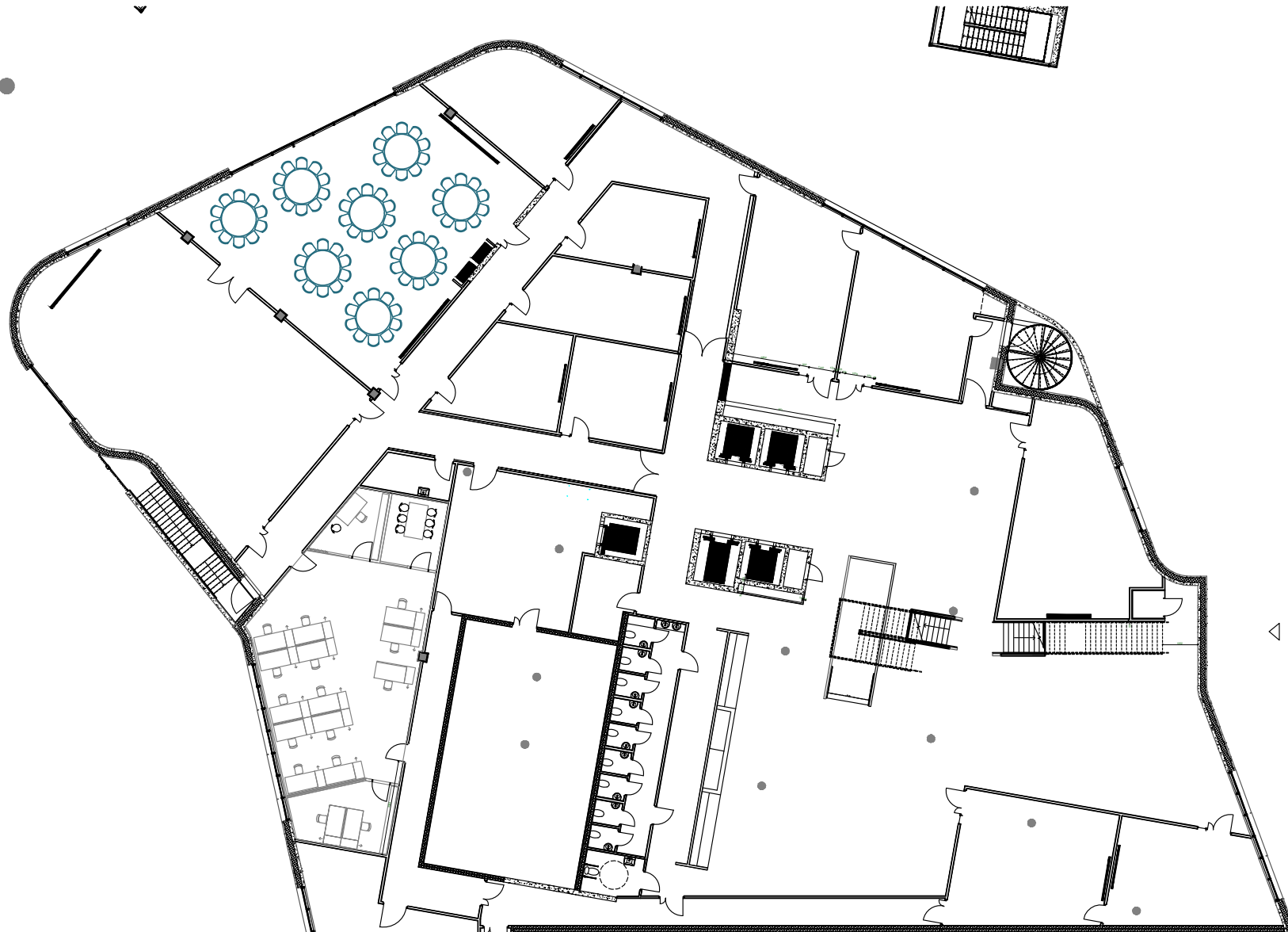
EXTRA LARGE MEETING ROOMS

Clarion Hotel Energy, Share 1+ 2

Area: 162 m²

Capacity: 80 pax

Set up: Round tables



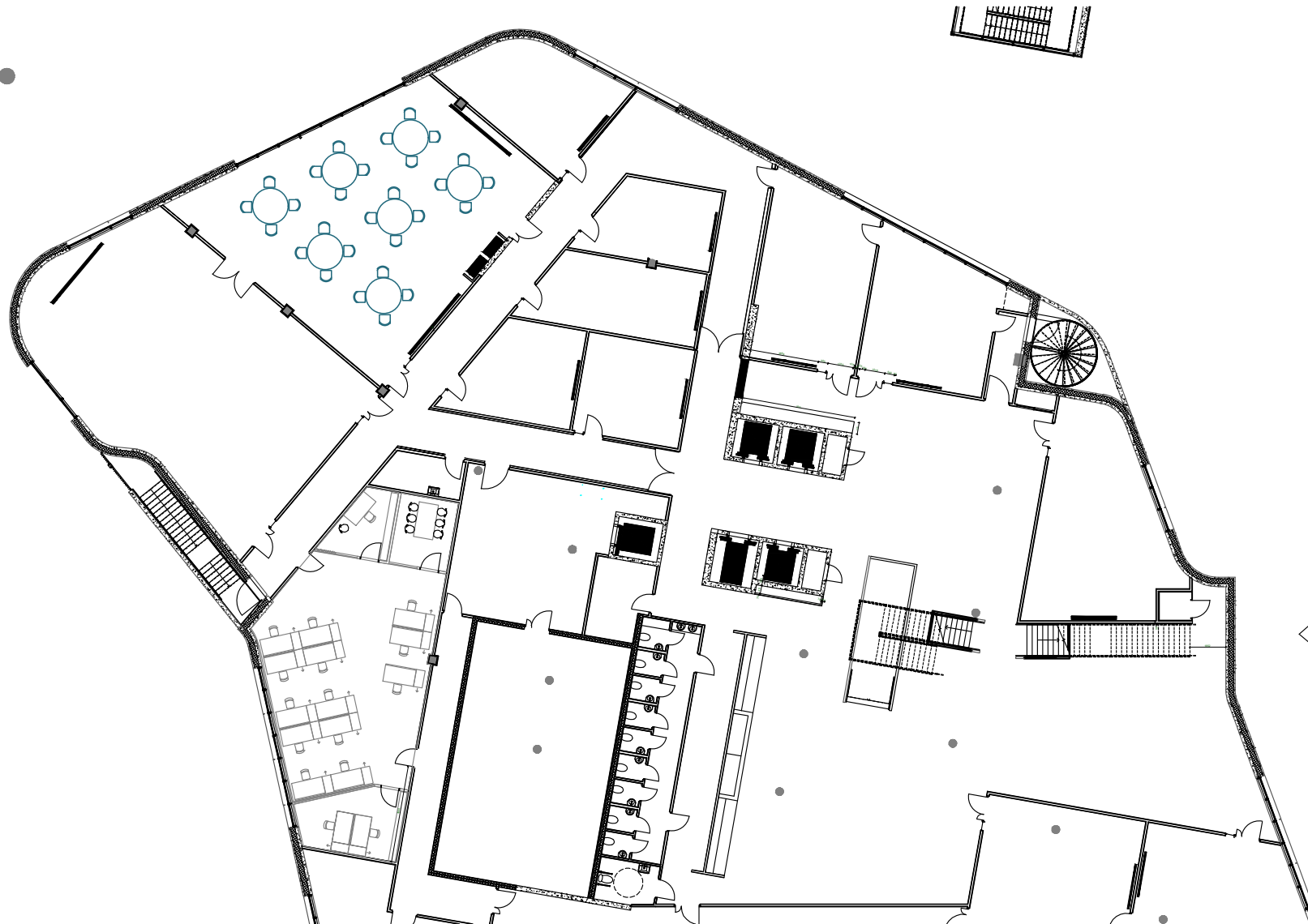
EXTRA LARGE MEETING ROOMS

Clarion Hotel Energy, Share 1+ 2

Area: 162 m²

Capacity: 28 pax

Set up: Round tables - Corona



CLARION HOTEL ENERGY, SHARE 1 + 2

Technical specifications

| | | | |
|-----------------------------------|----------------------------------|-----------------|--|
| Network | 30/20 WLAN (200/200 LAN) | Comments | For full technical specification, contact Kjetil Sletten at kjetil.sletten@choice.no |
| Projector | 1x Epson L610U (6000 ANSI/Lumen) | | |
| Back stage accommodation | None | | |
| House lightning | None | | |
| House sound / PA equipment | None | | |
| Truss / ceiling hight | None | | |
| Stage | None | | |
| Drapes | None | | |