

# EXTRA LARGE MEETING ROOMS

Clarion Hotel Energy, Energy Hall

**Area:** 890 m<sup>2</sup>

**Capacity:** 950 pax

**Set up:** Cinema



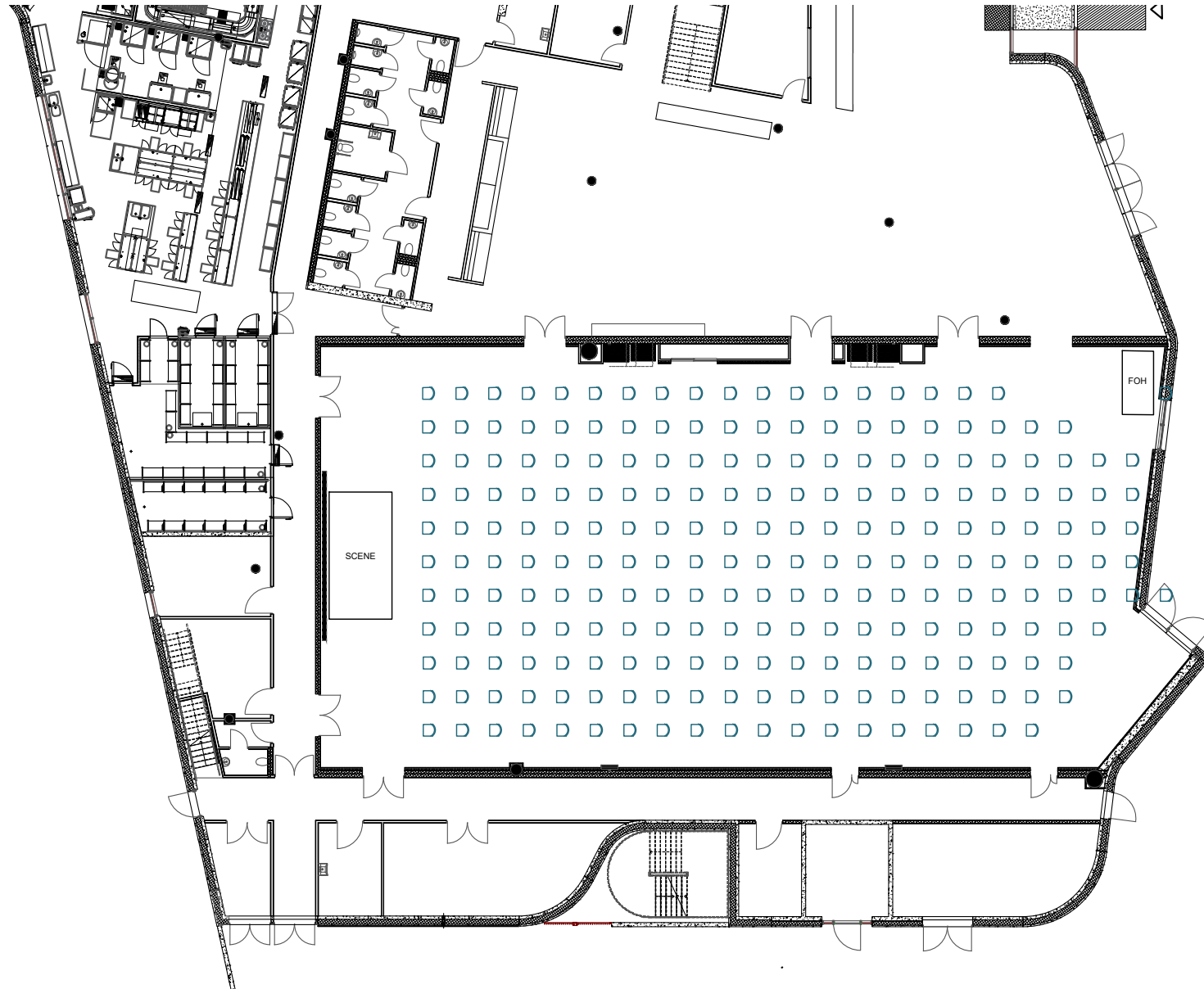
# EXTRA LARGE MEETING ROOMS

Clarion Hotel Energy, Energy Hall

**Area:** 950 m<sup>2</sup>

**Capacity:** 228 pax

**Set up:** Cinema - Corona



# EXTRA LARGE MEETING ROOMS

Clarion Hotel Energy, Energy Hall

**Area:** 890 m<sup>2</sup>

**Capacity:** 576 pax

**Set up:** Rectangular tables



# EXTRA LARGE MEETING ROOMS

Clarion Hotel Energy, Energy Hall

**Area:** 890 m<sup>2</sup>

**Capacity:** 168 pax

**Set up:** Rectangular tables - Corona



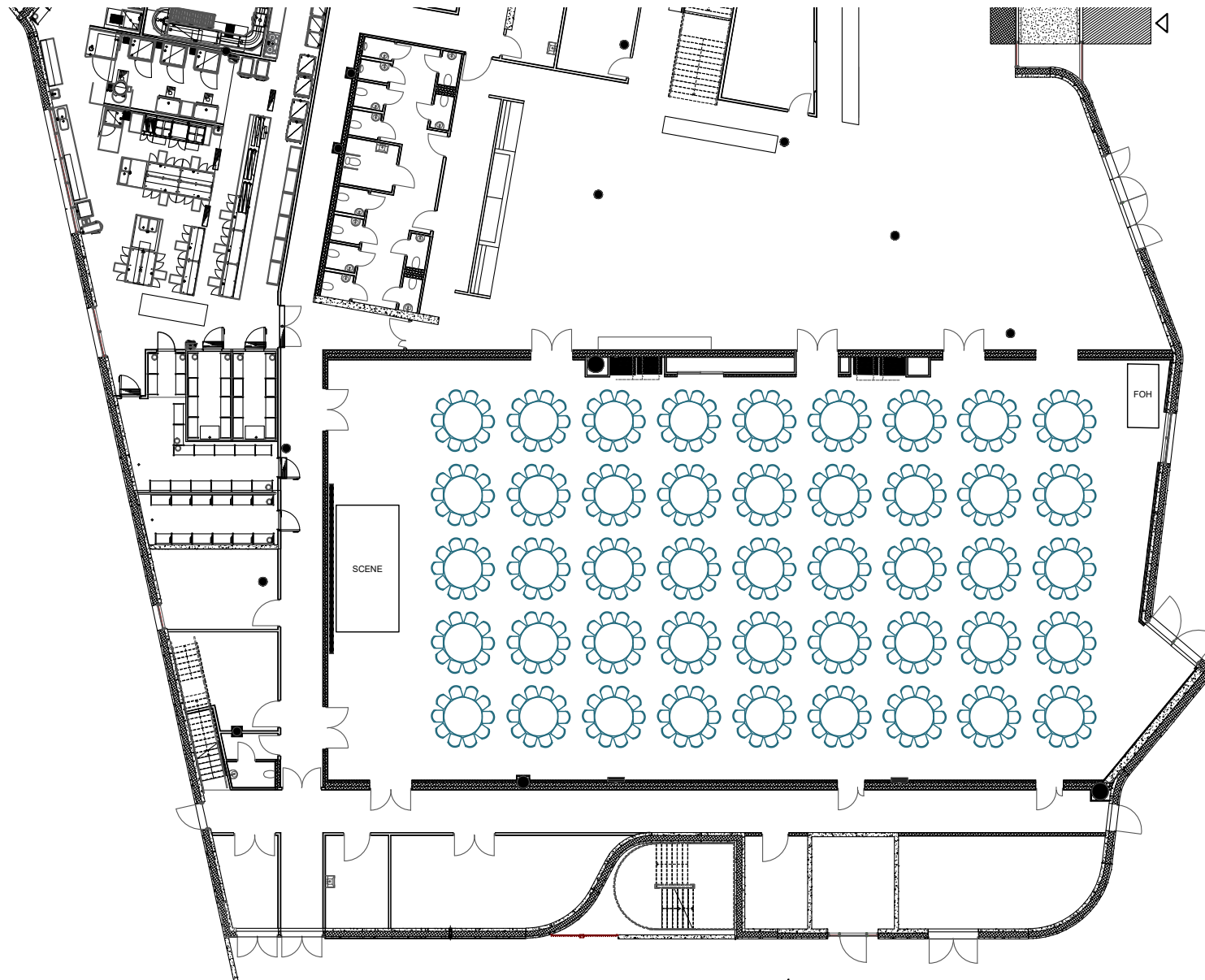
# EXTRA LARGE MEETING ROOMS

Clarion Hotel Energy, Energy Hall

**Area:** 890 m<sup>2</sup>

**Capacity:** 450 pax

**Set up:** Round tables



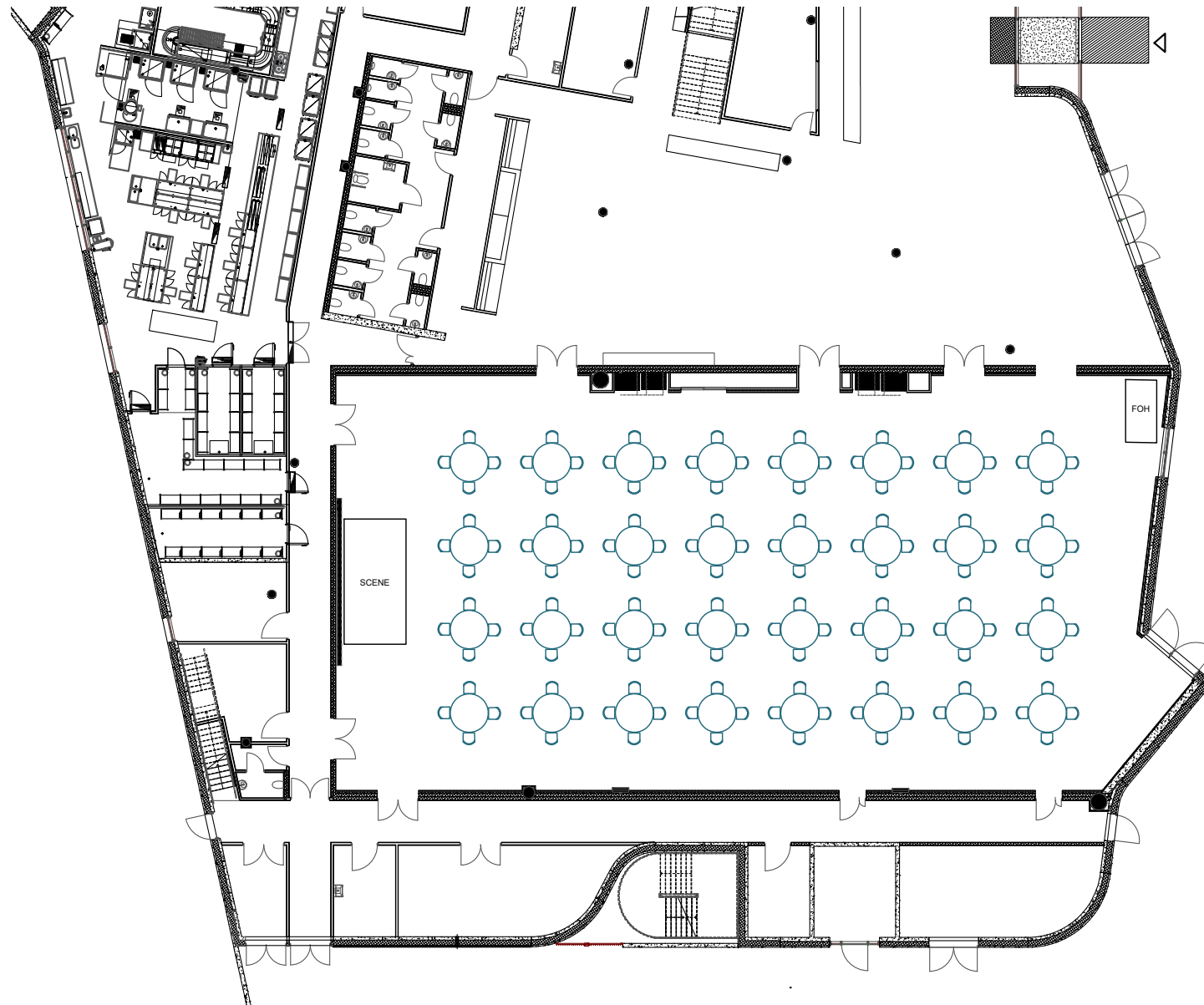
# EXTRA LARGE MEETING ROOMS

Clarion Hotel Energy, Energy Hall

**Area:** 890 m<sup>2</sup>

**Capacity:** 168 pax

**Set up:** Round tables - Corona



# CLARION HOTEL ENERGY, ENERGY HALL

## Technical specifications

<b>Network</b>	30/20 WLAN (200/200 LAN)	<b>Comments</b>	For full technical specification, contact Kjetil Sletten at kjetil.sletten@choice.no
<b>Projector</b>	1x Barco RLM-W12 (11 500 ANSI/Lumen) 4x Barco PHWU-81B (7500 ANSI/Lumen)		
<b>Back stage accommodation</b>	None		
<b>House lightning</b>	None		
<b>House sound / PA equipment</b>	Meyer Sound MINA Line Array (8 units x2 arrays)		
<b>Truss / ceiling high</b>	4x truss (1 over stage) 6.5 meter height (floor to truss)		
<b>Stage</b>	8x5 meter, 60cm height		
<b>Drapes</b>	Motorized drapes for two windows at the back of the hall		