

EXTRA LARGE MEETING ROOMS

Clarion Hotel Energy, Energy Hall 3

Area: 238 m²

Capacity: 253 pax

Set up: Cinema



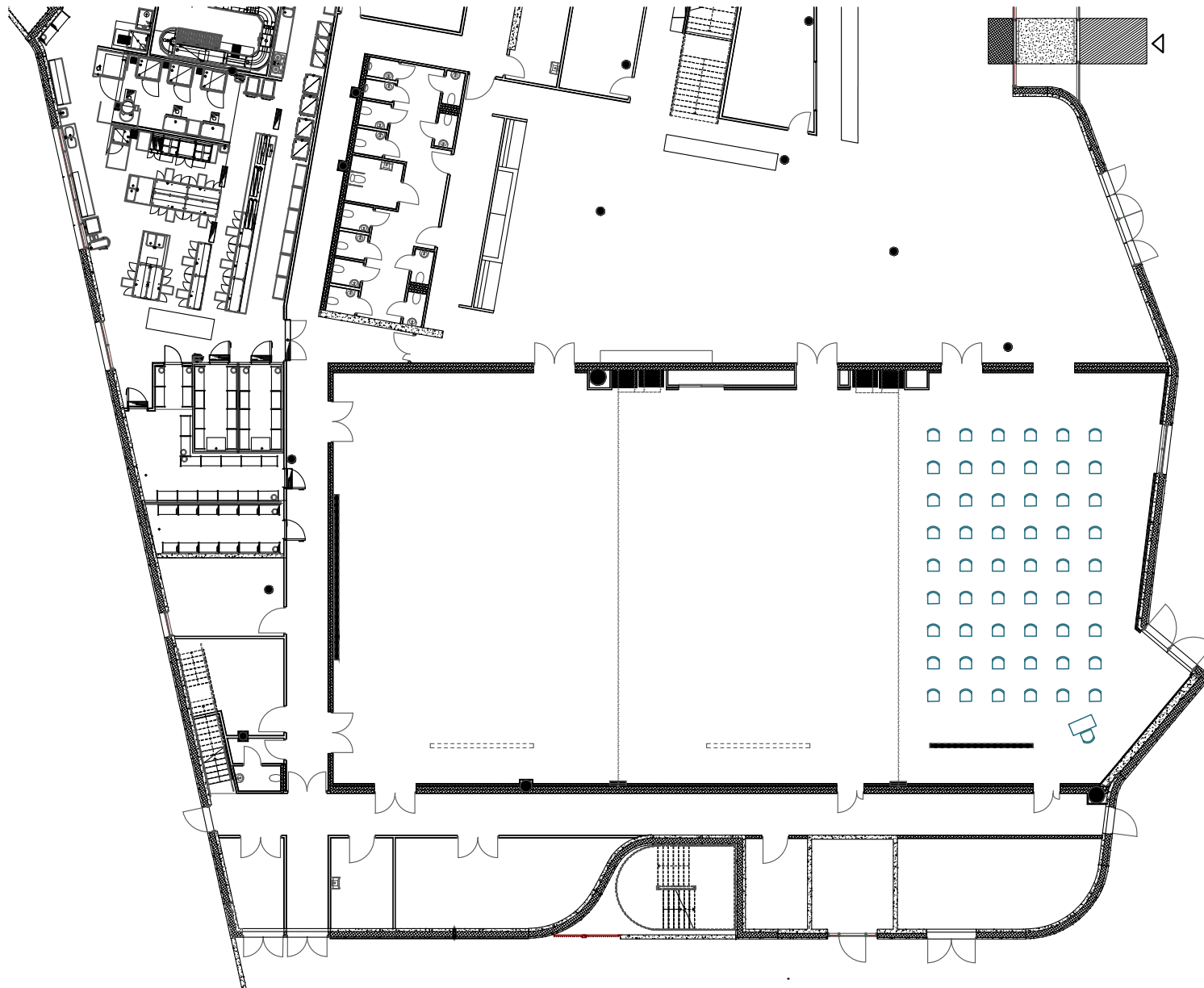
EXTRA LARGE MEETING ROOMS

Clarion Hotel Energy, Energy Hall 3

Area: 238 m²

Capacity: 54 pax

Set up: Cinema - Corona



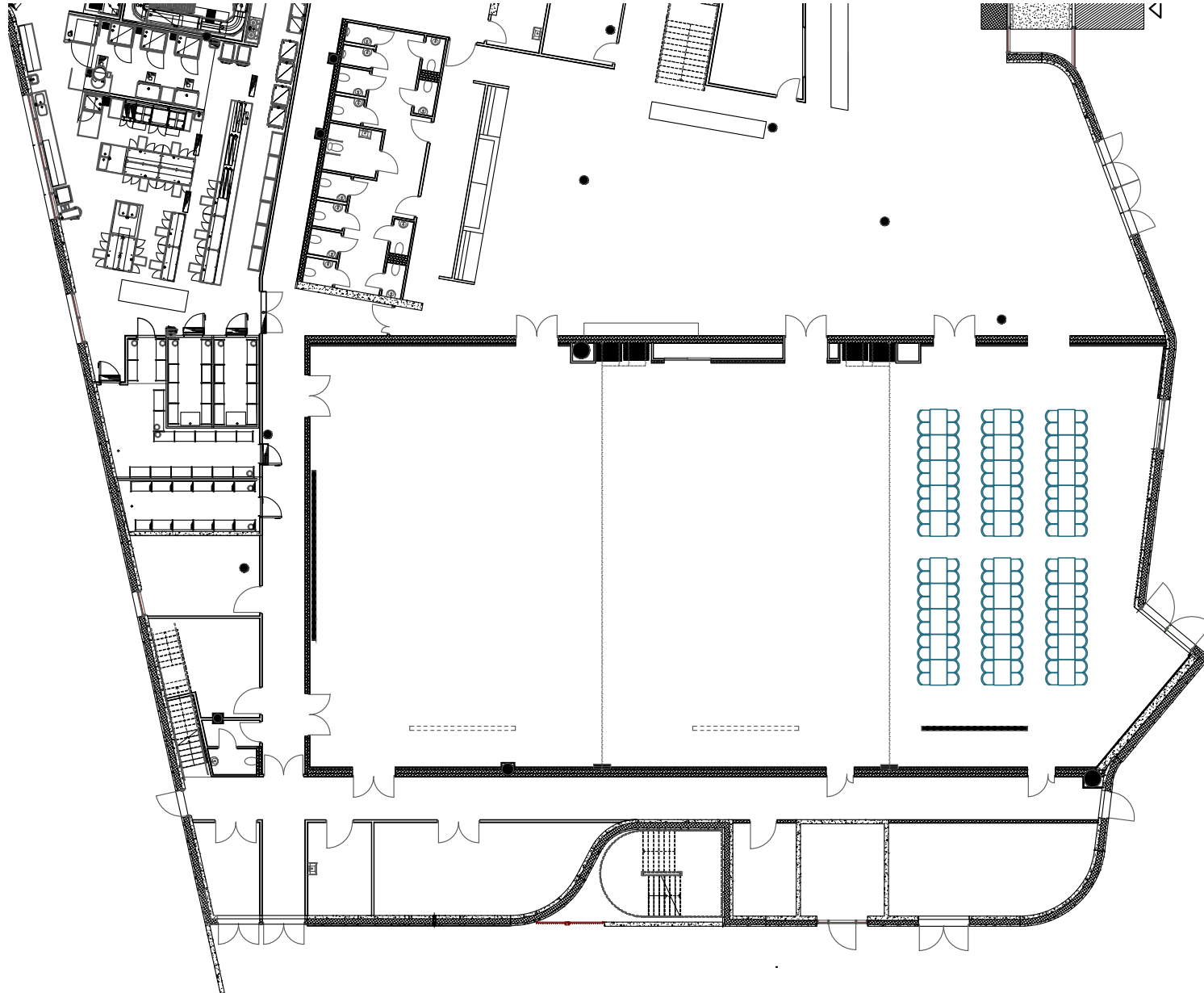
EXTRA LARGE MEETING ROOMS

Clarion Hotel Energy, Energy Hall 3

Area: 238 m²

Capacity: 120 pax

Set up: Rectangular tables



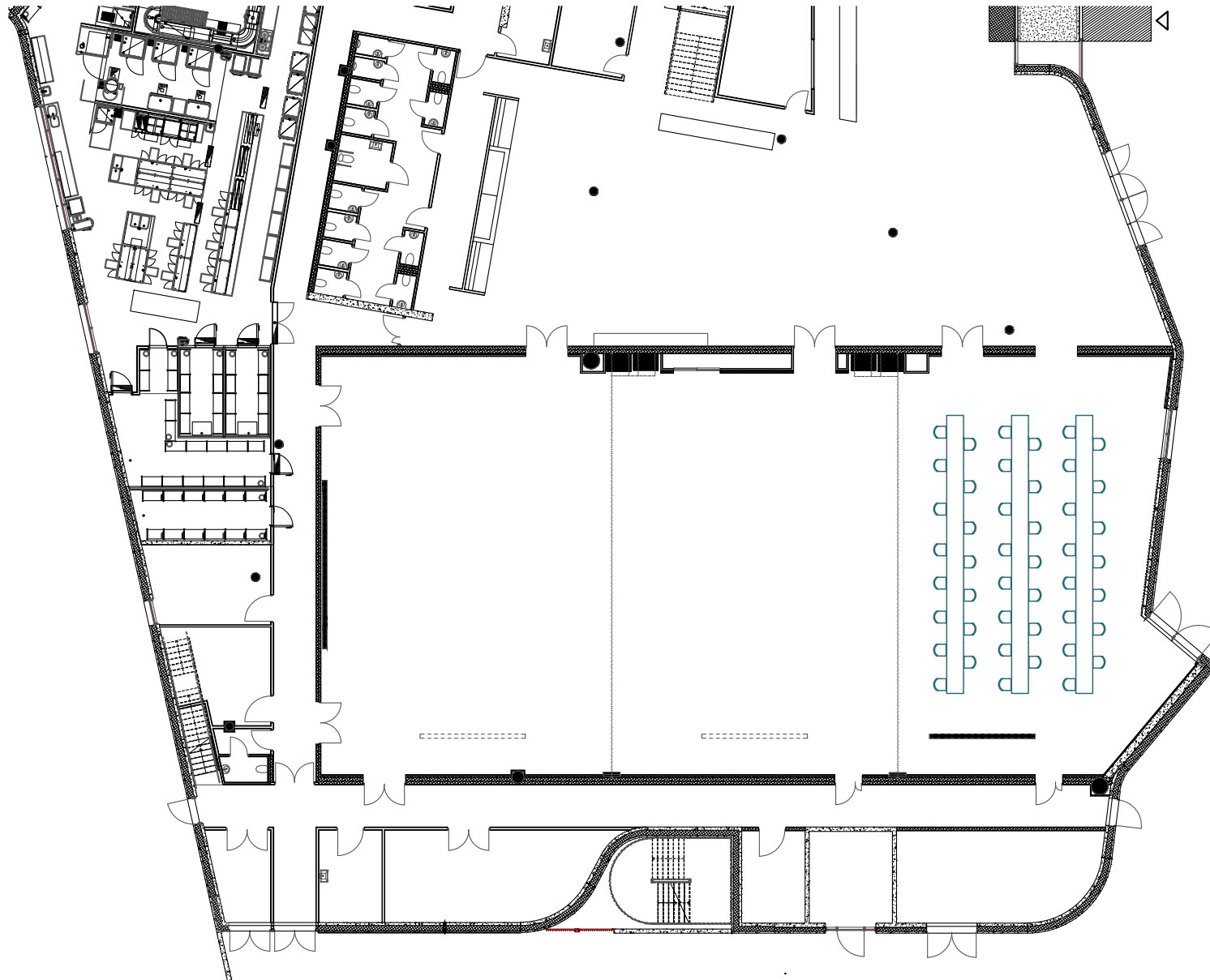
EXTRA LARGE MEETING ROOMS

Clarion Hotel Energy, Energy Hall 3

Area: 238 m²

Capacity: 45 pax

Set up: Rectangular tables - Corona



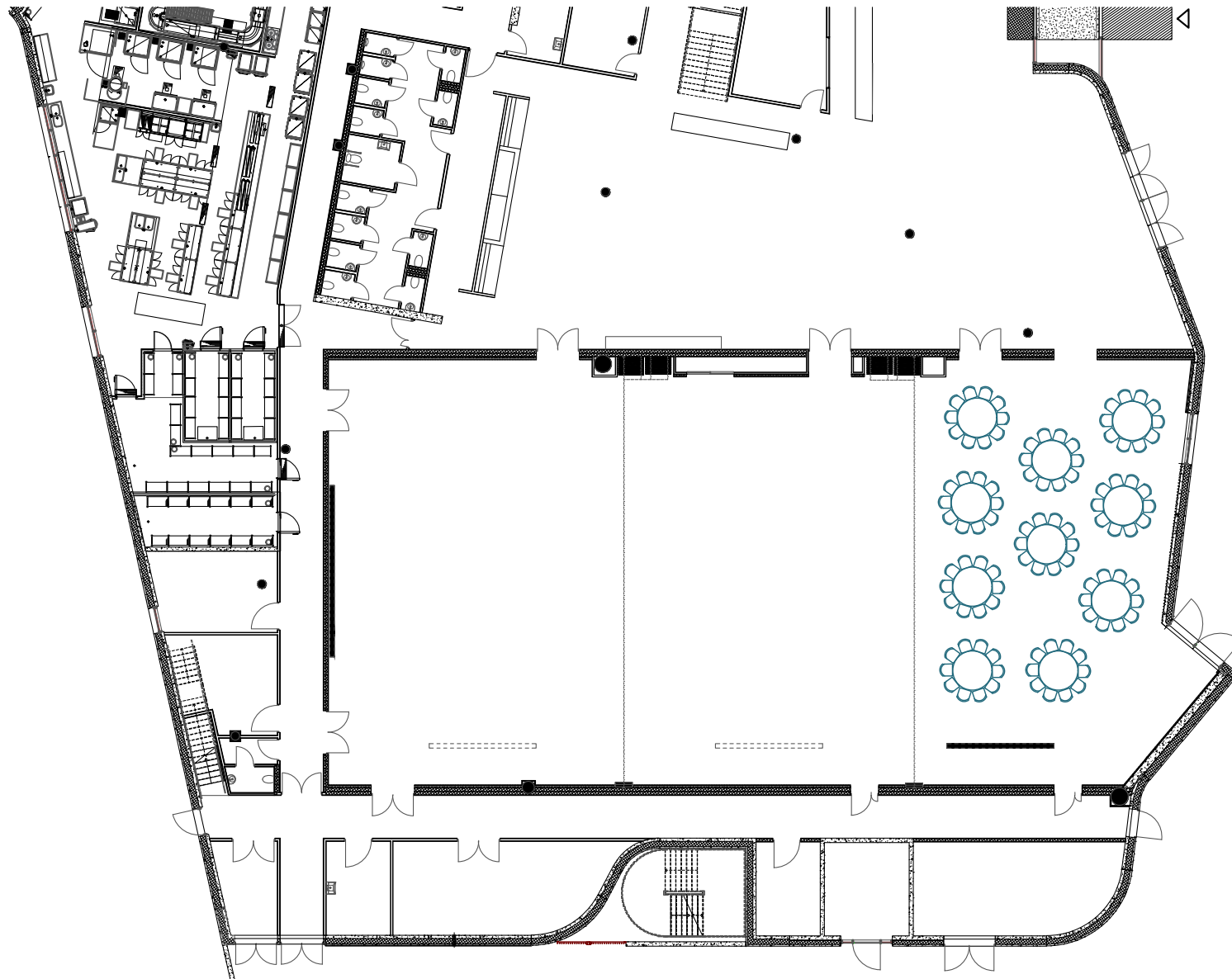
EXTRA LARGE MEETING ROOMS

Clarion Hotel Energy, Energy Hall 3

Area: 238 m²

Capacity: 100 pax

Set up: Round tables



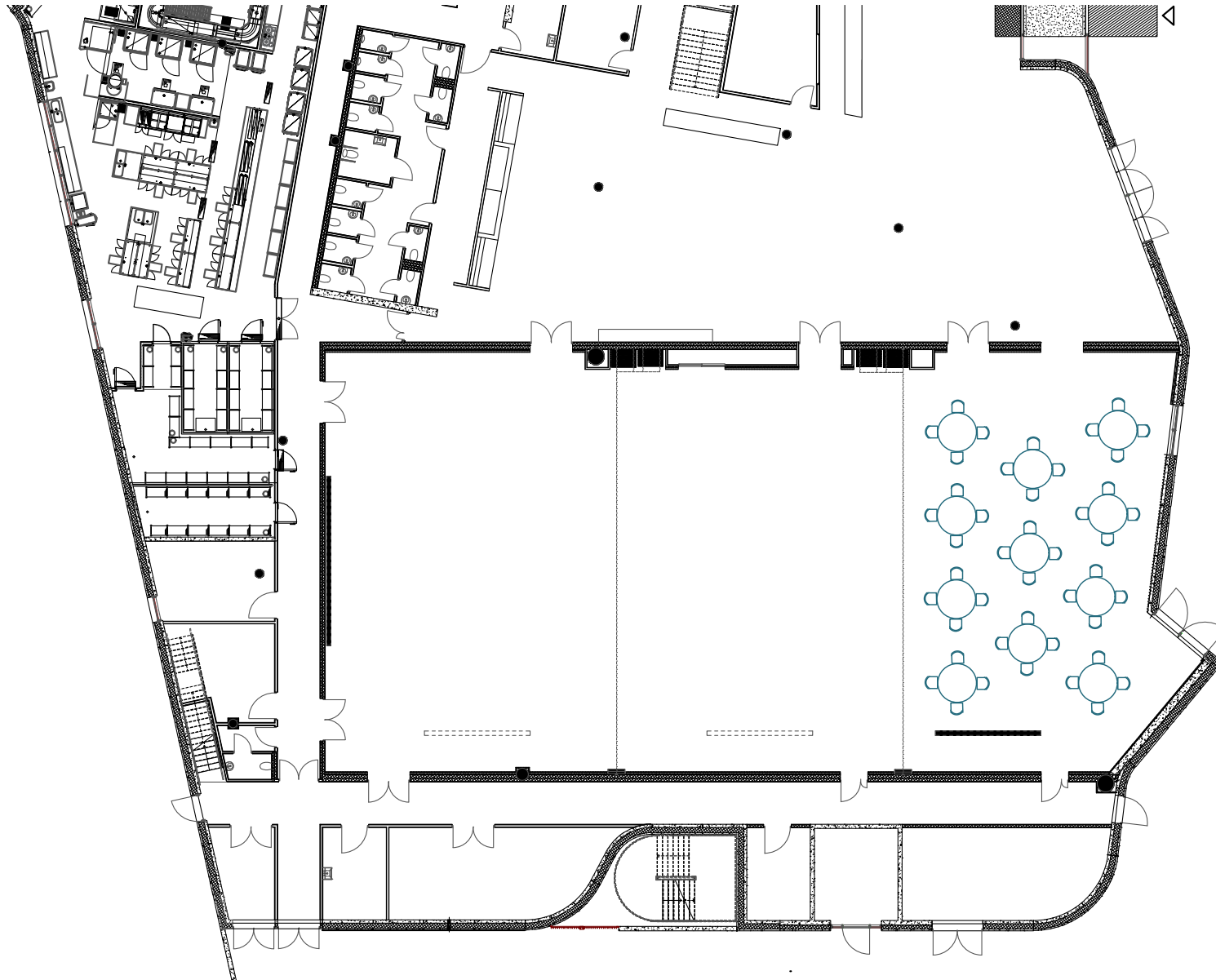
EXTRA LARGE MEETING ROOMS

Clarion Hotel Energy, Energy Hall 3

Area: 238 m²

Capacity: 44 pax

Set up: Round tables - Corona



CLARION HOTEL ENERGY, ENERGY HALL 3

Technical specifications

Network	30/20 WLAN (200/200 LAN)	Comments	For full technical specification, contact Kjetil Sletten at kjetil.sletten@choice.no
Projector	2x Barco PHWU-81B (7500 ANSI/Lumen)		
Back stage accommodation	None		
House lightning	None		
House sound / PA equipment	None		
Truss / ceiling hight	1x truss. 6.5 meter height (floor to truss).		
Stage	None		
Drapes	Motorized drapes for two windows at the back of the hall		