

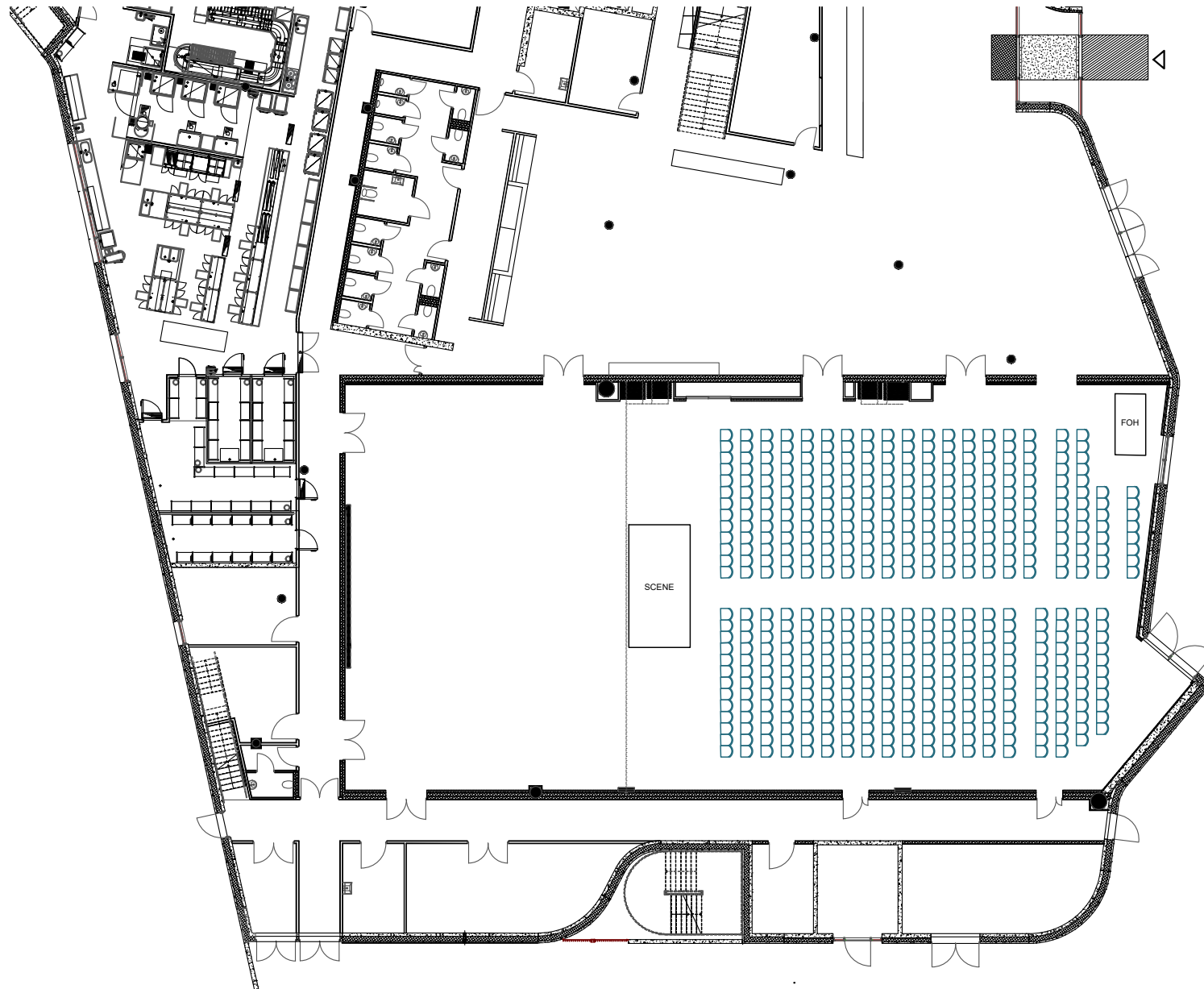
EXTRA LARGE MEETING ROOMS

Clarion Hotel Energy, Energy Hall 2 og 3

Area: 515 m²

Capacity: 494 pax

Set up: Cinema



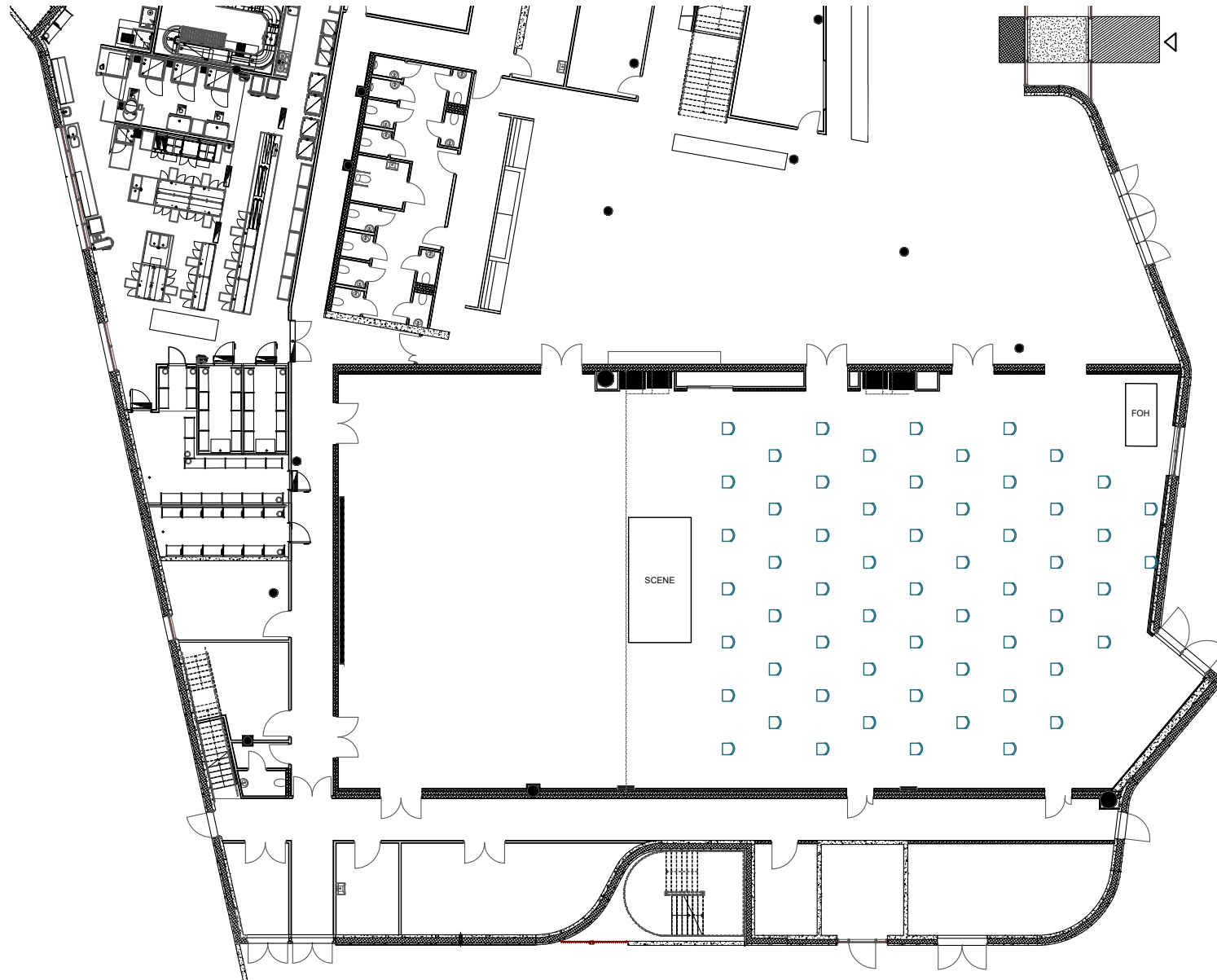
EXTRA LARGE MEETING ROOMS

Clarion Hotel Energy, Energy Hall 2 og 3

Area: 515 m²

Capacity: 58 pax

Set up: Cinema - Corona



EXTRA LARGE MEETING ROOMS

Clarion Hotel Energy, Energy Hall 2 og 3

Area: 515 m²

Capacity: 332 pax

Set up: Rectangular tables



EXTRA LARGE MEETING ROOMS

Clarion Hotel Energy, Energy Hall 2 og 3

Area: 515 m²

Capacity: 96 pax

Set up: Rectangular tables - Corona



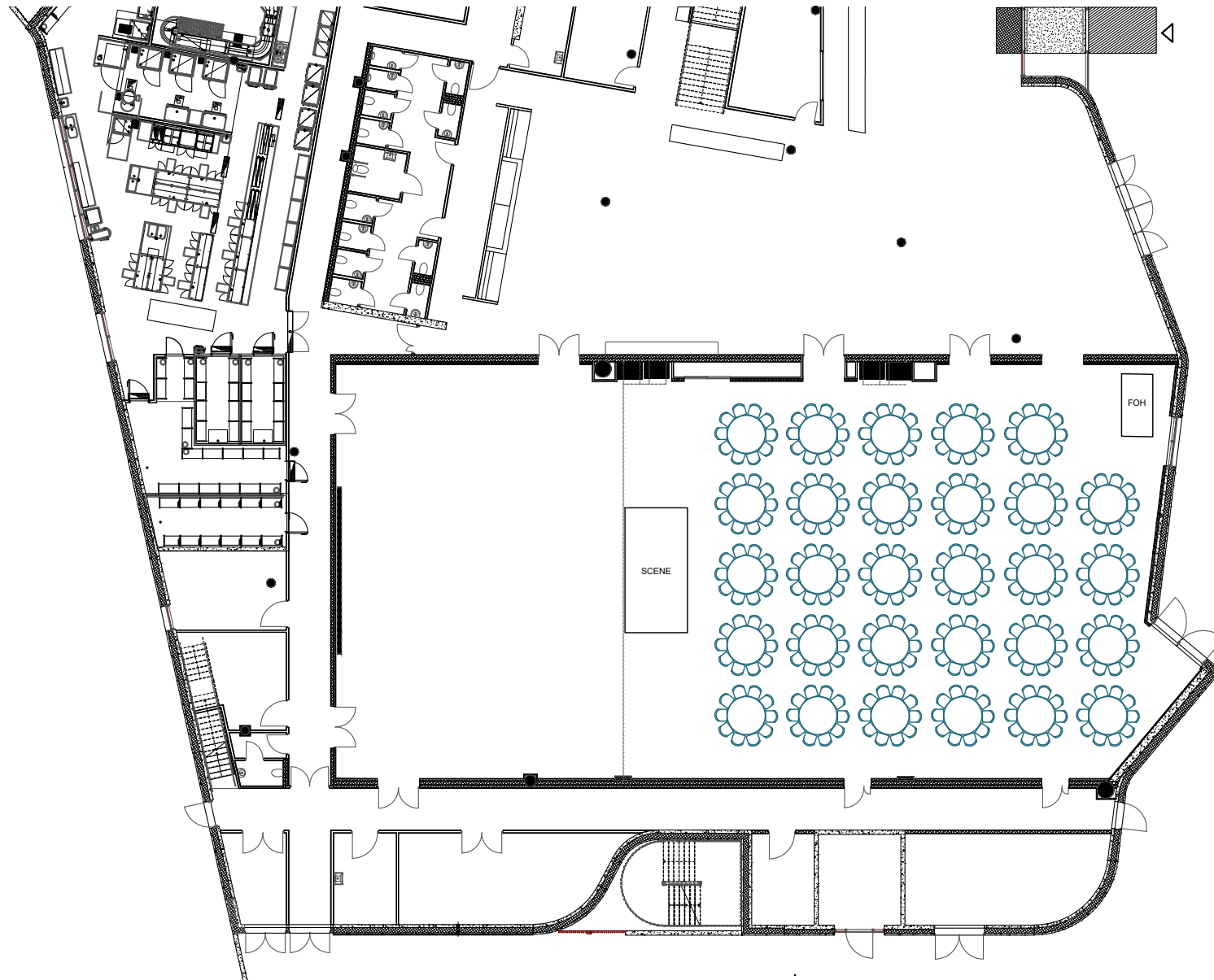
EXTRA LARGE MEETING ROOMS

Clarion Hotel Energy, Energy Hall 2 og 3

Area: 515 m²

Capacity: 290 pax

Set up: Round tables



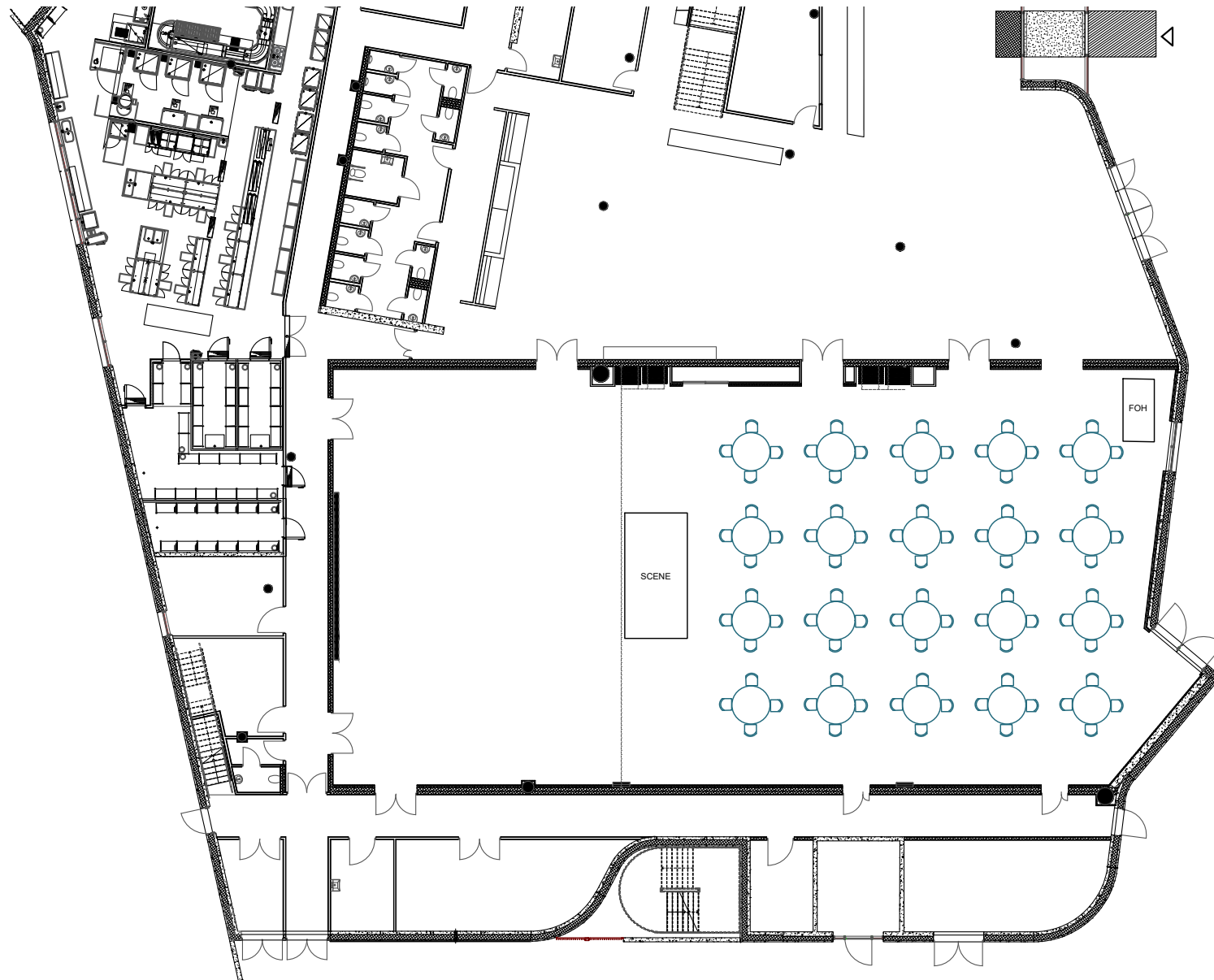
EXTRA LARGE MEETING ROOMS

Clarion Hotel Energy, Energy Hall 2 og 3

Area: 515 m²

Capacity: 80 pax

Set up: Round tables - Corona



CLARION HOTEL ENERGY, ENERGY HALL 2 OG 3

Technical specifications

Network	30/20 WLAN (200/200 LAN)	Comments	For full technical specification, contact Kjetil Sletten at kjetil.sletten@choice.no
Projector	4x Barco PHWU-81B (7500 ANSI/Lumen)		
Back stage accommodation	None		
House lightning	None		
House sound / PA equipment	None		
Truss / ceiling hight	3x truss. 6.5 meter height (floor to truss)		
Stage	None		
Drapes	Motorized drapes for two windows at the back of the hall		