

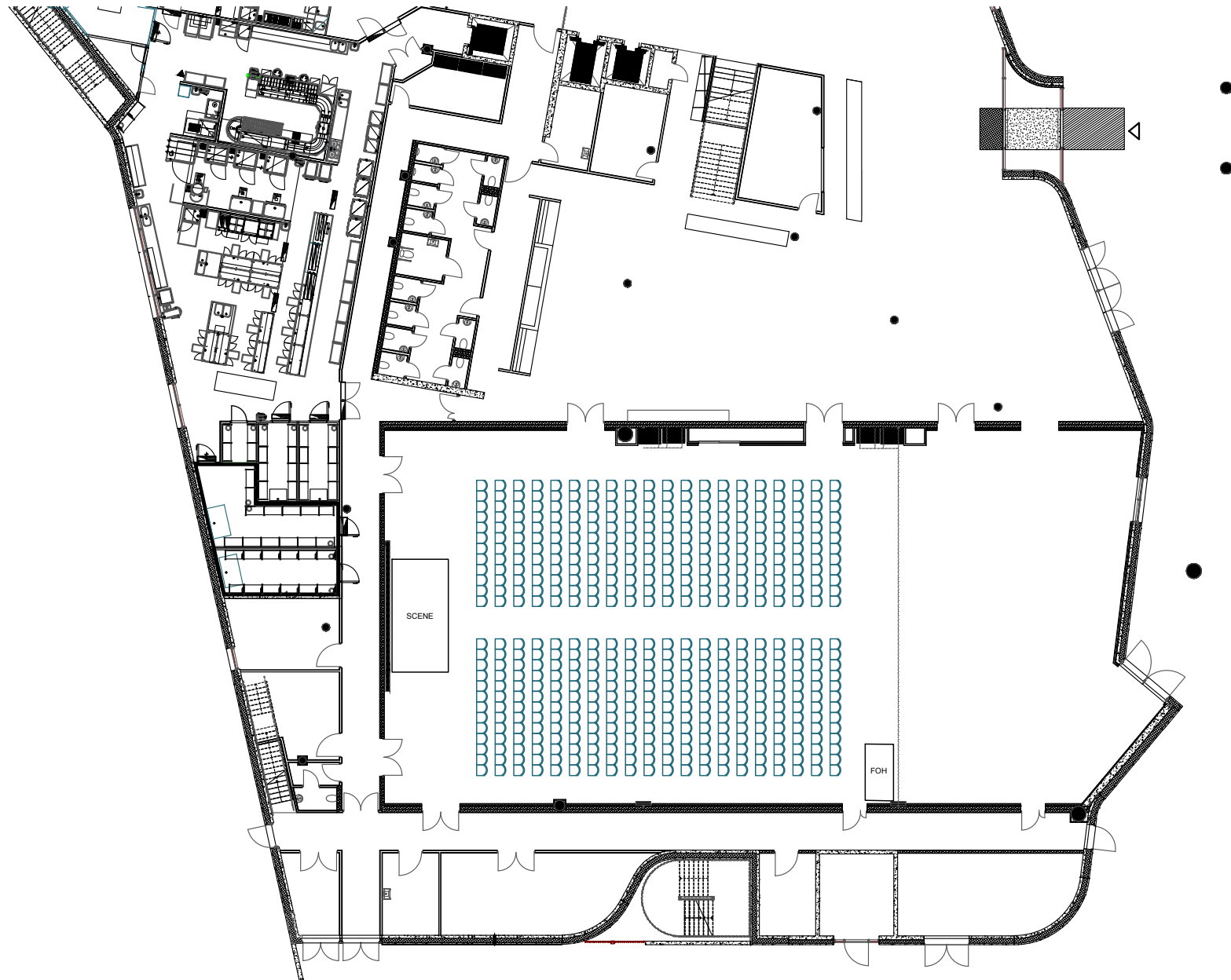
EXTRA LARGE MEETING ROOMS

Clarion Hotel Energy, Energy Hall 1 og 2

Area: 545 m²

Capacity: 500 pax

Set up: Cinema



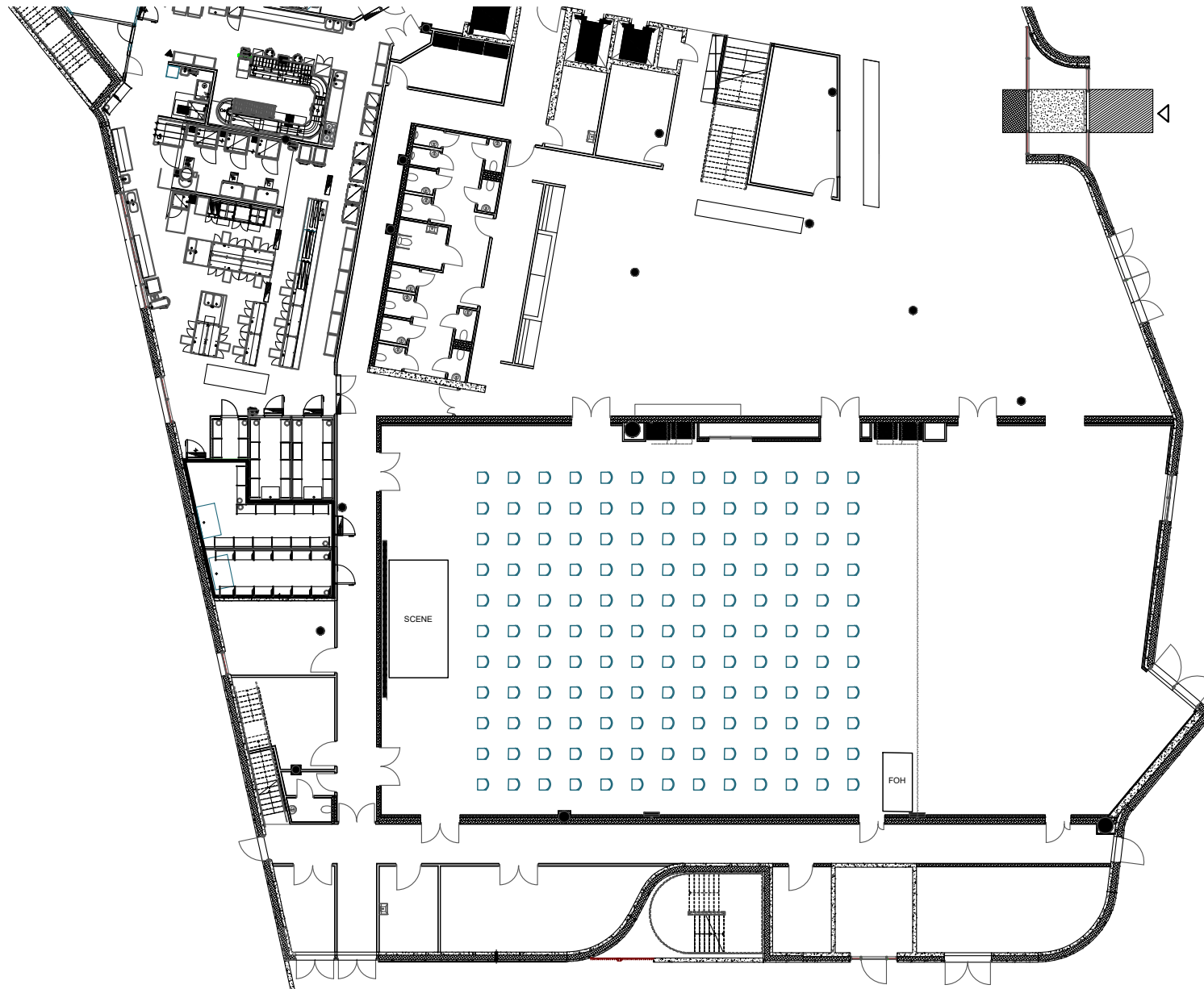
EXTRA LARGE MEETING ROOMS

Clarion Hotel Energy, Energy Hall 1 og 2

Area: 545 m²

Capacity: 143 pax

Set up: Cinema - Corona



EXTRA LARGE MEETING ROOMS

Clarion Hotel Energy, Energy Hall 1 og 2

Area: 545 m²

Capacity: 384 pax

Set up: Rectangular tables



EXTRA LARGE MEETING ROOMS

Clarion Hotel Energy, Energy Hall 1 og 2

Area: 545 m²

Capacity: 114 pax

Set up: Rectangular tables - Corona



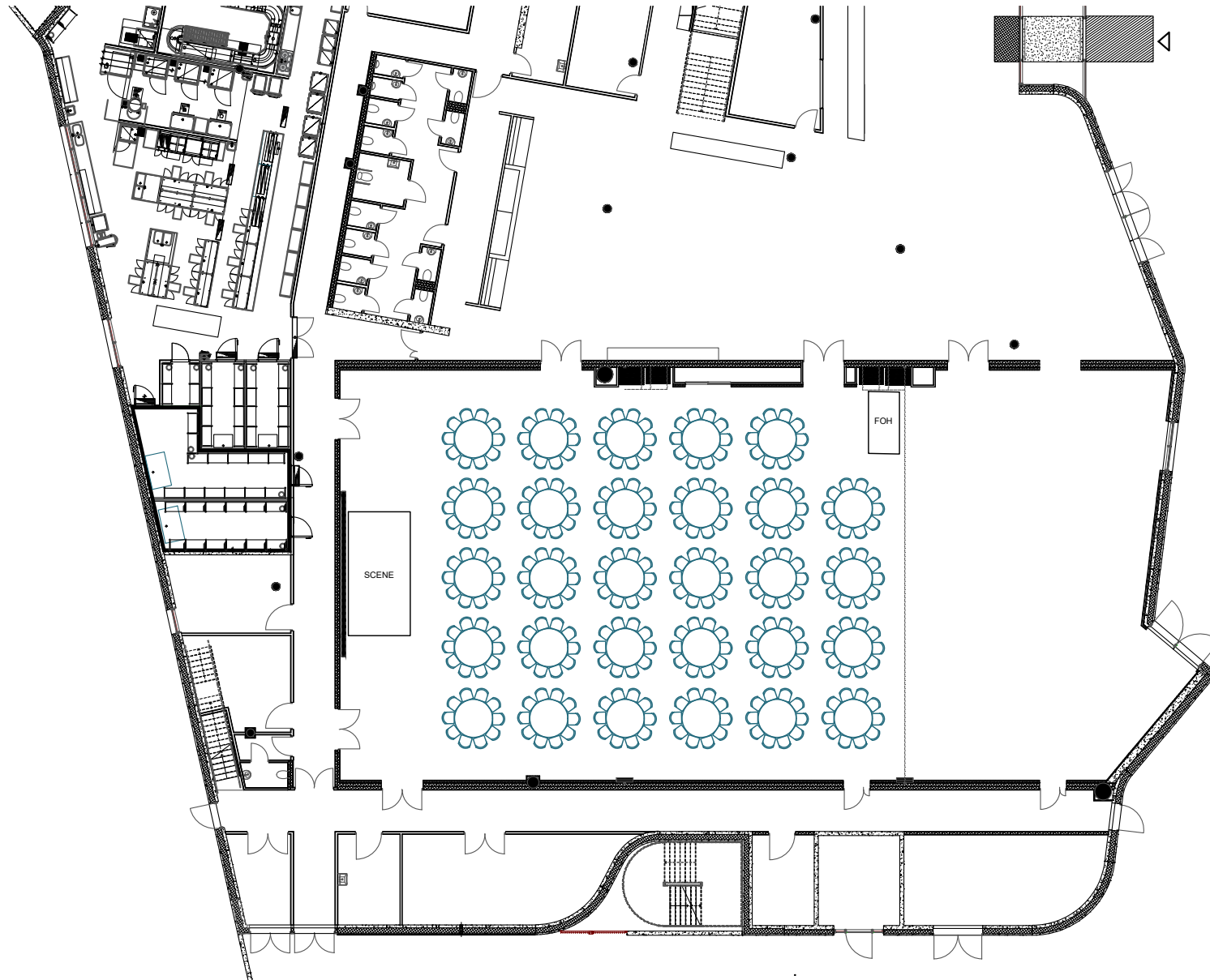
EXTRA LARGE MEETING ROOMS

Clarion Hotel Energy, Energy Hall 1 og 2

Area: 545 m²

Capacity: 290 pax

Set up: Round tables



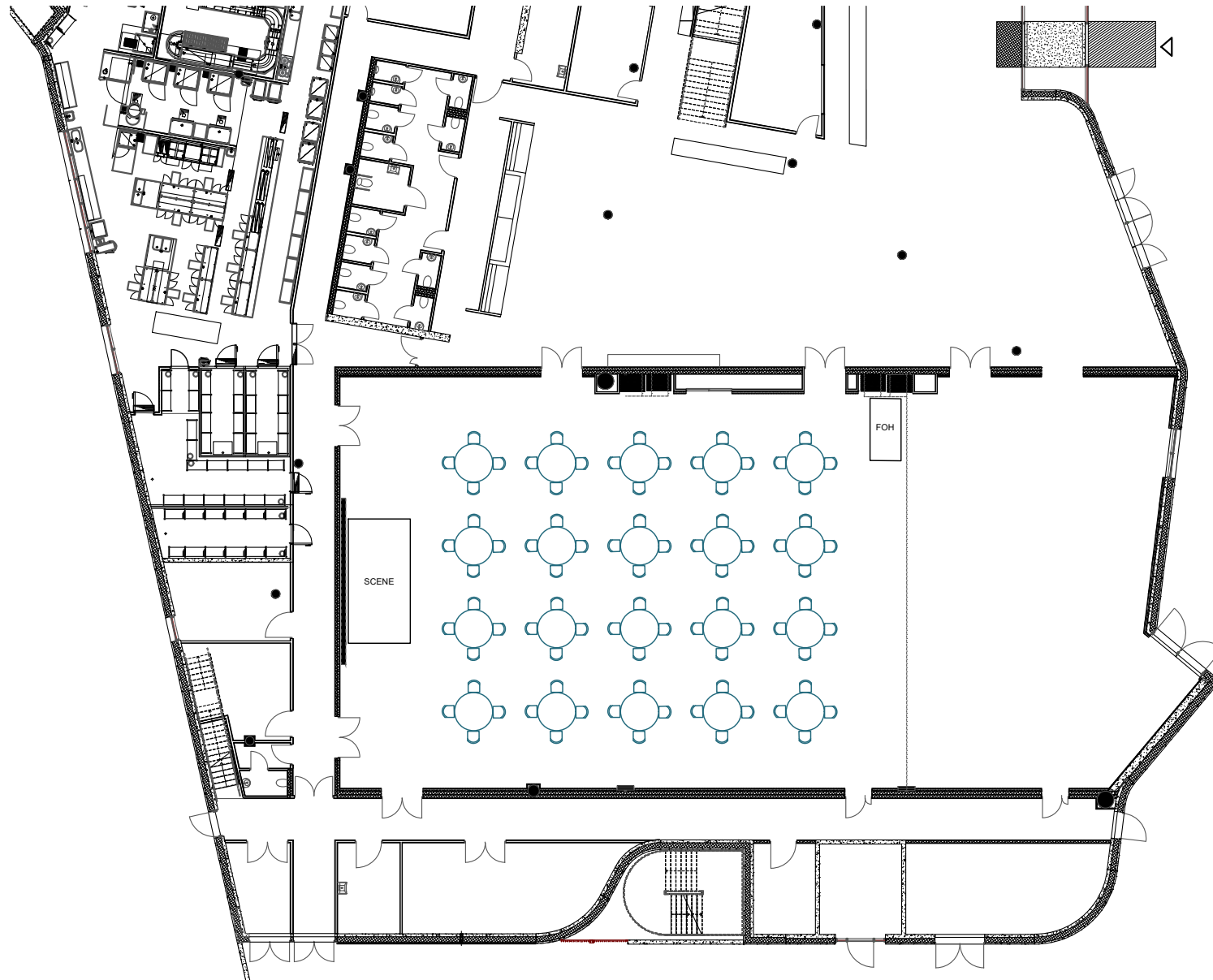
EXTRA LARGE MEETING ROOMS

Clarion Hotel Energy, Energy Hall 1 og 2

Area: 545 m²

Capacity: 80 pax

Set up: Round tables - Corona



CLARION HOTEL ENERGY, ENERGY HALL 1 OG 2

Technical specifications

Network	30/20 WLAN (200/200 LAN)	Comments	For full technical specification, contact Kjetil Sletten at kjetil.sletten@choice.no
Projector	1x Barco RLM-W12 (11 500 ANSI/Lumen) 4x Barco PHWU-81B (7500 ANSI/Lumen)		
Back stage accommodation	None		
House lightning	None		
House sound / PA equipment	Meyer Sound MINA Line Array (8 units x2 arrays)		
Truss / ceiling high	4x truss (1 over stage) 6.5 meter height (floor to truss)		
Stage	8x5 meter, 60cm height		
Drapes	None (no adjoining windows)		